



University of  
South Australia

# 2025 INTERNATIONAL STUDENT GUIDE



## UniSA Acknowledgement of Peoples and Country

UniSA respects the Kaurna, Boandik and Barngarla Peoples' spiritual relationship with their country.



Artist: Ngupulya Pumani

Find out more about the University's commitment to reconciliation:

[unisa.edu.au/RAP](https://unisa.edu.au/RAP)



University of  
South Australia



THE UNIVERSITY  
of ADELAIDE

## Adelaide University

*a new university for South Australia*

We're planning for an exciting new future.

The new Adelaide University, which is targeted to open in January 2026, will combine the strengths of the University of South Australia and the University of Adelaide to offer contemporary curriculum aligned to industry and enterprise, provide more flexible and accessible ways to study, and aim to deliver the best in research, student experience and graduate outcomes.

There are no changes for 2025 entry. If you start your studies with the University of South Australia or the University of Adelaide, you'll be highly supported in your transition to the new institution in either your existing or an equivalent program. Graduates from 2026 onwards will receive their award from the new Adelaide University.

*A new 'Adelaide University' is subject to legal and regulatory approvals.*



Discover more at  
[adelaideuni.edu.au](https://adelaideuni.edu.au)



# YOUR JOURNEY STARTS HERE

## Welcome to the University of South Australia.

*Join our globally connected and engaged university with industry-informed teaching and research that is inventive and adventurous.*

*Benefit from real-world experiences thanks to our practical approach to teaching and learning.*

*Get the knowledge, skills and confidence you need to graduate career ready.*

# ONE OF THE WORLD'S TOP YOUNG UNIVERSITIES

Ranked #52, 2023 THE Young University Rankings.



## OVERALL FIVE STAR RATING FOR EXCELLENCE

2023 QS Stars Ratings.



## #1 IN AUSTRALIA FOR GRADUATE EMPLOYABILITY

QILT Employer Satisfaction Survey, 2020-22 – Employability Skills Indicator. Public universities.



## TOP 5 IN AUSTRALIA FOR QUALITY EDUCATION

Ranked #3, 2023 THE University Impact Rankings.



## #4 IN AUSTRALIA FOR INDUSTRY RESEARCH INCOME AND PATENTS

Ranked equal #4, 2024 THE World University Rankings.



## TOP 5 IN AUSTRALIA FOR PRODUCING GREATEST NUMBER OF CEOs

Ranked #4, Forbes List of Global Companies – MBA News February, 2022.



## TOP 10 IN AUSTRALIA FOR STUDENT SUPPORT

Ranked #8, ComparED (QILT) Student Experience Survey 2021-22, Student Support Indicator (Undergraduate). Public universities.



## JOIN OUR CAMPUS COMMUNITY

**36,000+**  
STUDENTS

**5,700+**  
INTERNATIONAL STUDENTS

**2,800+**  
STAFF

**240,000+**  
ALUMNI

**20+**  
RESEARCH INSTITUTES AND CONCENTRATIONS

**2,500+**  
INDUSTRY PARTNERSHIPS

Figures are indicative of 2023



# GRADUATE CAREER READY

## TOP RANKING TEACHERS

Learn from our highly qualified academics and industry professionals. Our teaching staff are focused on providing you with the most current practices and global trends.

## PRACTICAL LEARNING

You will learn in a practical environment with a focus on internships, placements, real-world projects, research, mentoring, industry and employer masterclasses as well as opportunities to volunteer and participate in community based programs.

## POWERFUL PARTNERSHIPS

Our curriculum is influenced and codeveloped with industry. Connect with industry during your studies and build your professional networks before you graduate.



**COLLABORATING WITH 2,500+ COMPANIES WORLDWIDE**

## CAREER SERVICES

Our Career Services team will help you prepare for your future career. You can connect with a career adviser for expert advice and be part of a comprehensive career development program, which includes exclusive networking opportunities, industry events along with access to our online CareerHub with the latest resources and job listings.

Career Services will help you develop your professional skills through a number of key areas:

- > Establishing your career pathway
- > Building your employability
- > Self-help career resources
- > Finding work
- > Events and workshops
- > Building a professional network
- > Career advice
- > Career news
- > Your future beyond graduation
- > Career development learning

[unisa.edu.au/careers](https://unisa.edu.au/careers)

### BECOME A FUTURE LEADER

Shape your own journey with our unique leadership and self-development programs. By participating in the UniSA+ Award or ASPIRE Award, you will develop the practical skills needed for the modern workplace, including leadership, entrepreneurship, cultural understanding, effective communication, self-awareness, and much more.

[unisa.edu.au/studentleadership](https://unisa.edu.au/studentleadership)



**94% OF OUR INTERNATIONAL STUDENTS ARE SATISFIED WITH OUR CAREERS SERVICES**

2023 i-Graduate International Student Barometer – Careers Services Indicator (93.5%).



# WORK-READY PROFESSIONALS



## TOP 10 IN AUSTRALIA FOR GRADUATE SKILLS

Ranked #6 (Undergraduate), ComparED (QILT) Student Experience Survey 2021-22, Skills Development Indicator. Public universities.



### REALISING A PASSION FOR ACCOUNTING

**MINGYANG RICHARD ZHANG**  
China

Master of Professional Accounting  
Graduate Auditor at Deloitte

While Mingyang's desire to pursue accounting blossomed later in life, it is a career choice he was happy he made. After completing a Bachelor of Visual Design in China, Mingyang had an awakening, realising his passion lay in accounting.

Inspired by his grandmother, who is a successful accountant back home, Mingyang was determined to achieve success abroad. Today, Mingyang works as a Graduate Auditor at Deloitte, a company known as a global leader in professional services, and uses his newfound skills to embrace Australia's vibrant working culture.

*"I would definitely recommend UniSA's Master of Professional Accounting. For me, the degree was life changing, equipping me with the fundamentals needed to succeed in the workforce. It allowed me to meet people from different backgrounds and cultures, which I found extremely beneficial and eye-opening."*



### LEADING A NEW WAVE OF PROFESSIONALS

**NEVEN ABDELAZIZ MOHAMED ELSAYED**  
Egypt

PhD in Computer and Information Science

Computer Science Lecturer at Benha University

Information and communications technology is among Egypt's fastest growing sectors. Neven is just one of the many professionals helping propel its information technology (IT) workforce to the global stage.

Using her time at UniSA to fully understand the potential of innovative technologies, augmented reality and virtual reality, Neven has embedded this new knowledge back home, introducing a third year Computer Graphics course in the Bachelor of Computer Science at Benha University. This pioneering decision influenced other universities across Egypt to launch a similar course, which Neven has helped shape. Through this new program, Neven is ensuring Egyptian computer science students are competitive and agile in the global IT market.

*"I learnt from UniSA how to invent, employ and evaluate innovative research in a range of different settings. UniSA also taught me the importance and benefits of multidisciplinary research."*



### ENDLESS OPPORTUNITIES FOR SUCCESS

**SAIF SHAIKH**  
India

Bachelor of Commerce (Accounting)\*

Senior Finance Business Partner at Keolis Downer

When opportunity presents itself, Saif is not one to shy away from the unknown. With a curious mind and an affinity for numbers, Saif has already experienced the positive impact a commerce degree can have. He has had the chance to work in a variety of settings since graduating including in the disability and transport sectors.

So when Saif became a finance business partner at Keolis Downer, Australia's largest private provider of multimodal public transport and was offered the senior position only one year later, it was an offer he happily accepted.

*"UniSA has provided me with lots of skills and knowledge throughout my studies. All of the teaching staff are really well qualified and teach in a very understandable manner. They helped me get the best out of me, which led me to the right path of my career."*

\*This degree is now known as a Bachelor of Accounting.



### COMBINING TALENT WITH SOCIAL MEDIA

**HOANG YEN NGUYEN**  
Vietnam

Bachelor of Design (Illustration and Animation)

User Interface Artist at Tantalus South

Possessing a natural creative flair and yearning to break into the animation industry, Yen's route to securing an artist role at Tantalus South, a global video gaming company which has worked with global enterprises including Microsoft, is testament to her hard work and ingenuity.

Harnessing the power of social media, Yen used the Instagram platform to share her creations, one of which was discovered by her UniSA lecturer at the time. Her lecturer then shared Yen's piece to a friend, who happened to be a producer. Fast forward a short while later, Yen was offered a job, an interview and is now proudly doing what she loves.

*"I was amazed by the UniSA teaching staff as they are very dedicated and caring of our assignments and our well-being. The lecturers give good advice, which allowed me to have a creative space to explore and find my own style."*



### IMPROVING COMMUNITY HEALTH

**JOSEPH MSETEKA**  
Zambia

Master of Health Services Management

Principal Nursing Officer at Eastern Provincial Health Office

Determined to further his skillset for the benefit of his community back home, Joseph is a prime example of how one can use knowledge as a catalyst for change. Recognising the need for more vaccine fridges in 33 healthcare settings across Zambia's most remote and regional areas, Joseph used the problem solving and interpersonal skills he gained at UniSA, to solve the issue.

Joseph wrote a proposal to Amref Health Africa, the largest health development non-governmental international organisation, requesting the need for more vaccine fridges in Zambia. Six months later, through perseverance, negotiation and analytical capabilities, he was able to procure six vaccine fridges which helps ensure his community is protected against preventable disease.

*"I chose UniSA so that I could acquire unique and diverse knowledge, skills, learning experiences and research processes, which will help me manage problematic areas in a developing nation like Zambia."*

### JOIN OUR ALUMNI NETWORK

When you graduate you will become part of more than 240,000 alumni from around the world with formal networks in Hong Kong SAR, Singapore, Malaysia, Vietnam, Indonesia, and the United Kingdom.

📍 [unisa.edu.au/alumni](https://unisa.edu.au/alumni)



CHOOSE FROM  
50+ EVENTS EACH  
YEAR ACROSS ALL  
CAMPUSES



# YOUR STUDENT EXPERIENCE

[unisa.edu.au/studentlife](https://unisa.edu.au/studentlife)

## CONNECT WITH OTHERS

› USASA (University of South Australia Student Association) is your student association, organising social activities and coordinating student clubs.

[unisa.edu.au/USASA](https://unisa.edu.au/USASA)

› With 90+ academic, cultural and social clubs, there is something for everyone! It is a great way to meet new friends and enjoy your university experience.

[unisasport.edu.au/clubs](https://unisasport.edu.au/clubs)

› Orientation is the start of your journey at university. Explore your campus, meet new people, connect with teaching staff and enjoy activities.

[unisa.edu.au/orientation](https://unisa.edu.au/orientation)

## GET ACTIVE

› Health and Fitness Centres can be found across all city and metropolitan campuses including a 25m heated swimming pool at Pridham Hall.

› UniSA Sport has 25+ sporting clubs, including rowing, netball, gridiron, rock climbing and even esports!

[unisasport.edu.au](https://unisasport.edu.au)

## FEEL SUPPORTED

› Campus Central is ready to help you with everything from ID cards, to enrolment and student services.

## SUPPORT SERVICES

- › Study support
- › Language assistance
- › Personal counselling
- › Disability and inclusion services
- › Health services
- › Online support
- › Accommodation assistance
- › Legal advice
- › Free peer study sessions
- › 24/7 security on campus

[unisa.edu.au/internationalstudents](https://unisa.edu.au/internationalstudents)



GYM MEMBERSHIPS  
AVAILABLE AT ALL  
CAMPUSES



**95% OF OUR INTERNATIONAL STUDENTS FEEL SUPPORTED WITH THEIR STUDIES**

2023 i-Graduate Survey International Student Barometer – Study Support Indicator (95.3%).

# WORLD-CLASS FACILITIES



**VR & AR Technology** / Explore the world through a new reality with access to the latest augmented and virtual reality technologies during your studies.



**Mechanical Engineering Workshop** / A collaborative teaching space where engineering students can explore full-cycle manufacturing processes.

## FROM THE CLASSROOM TO THE WORKPLACE

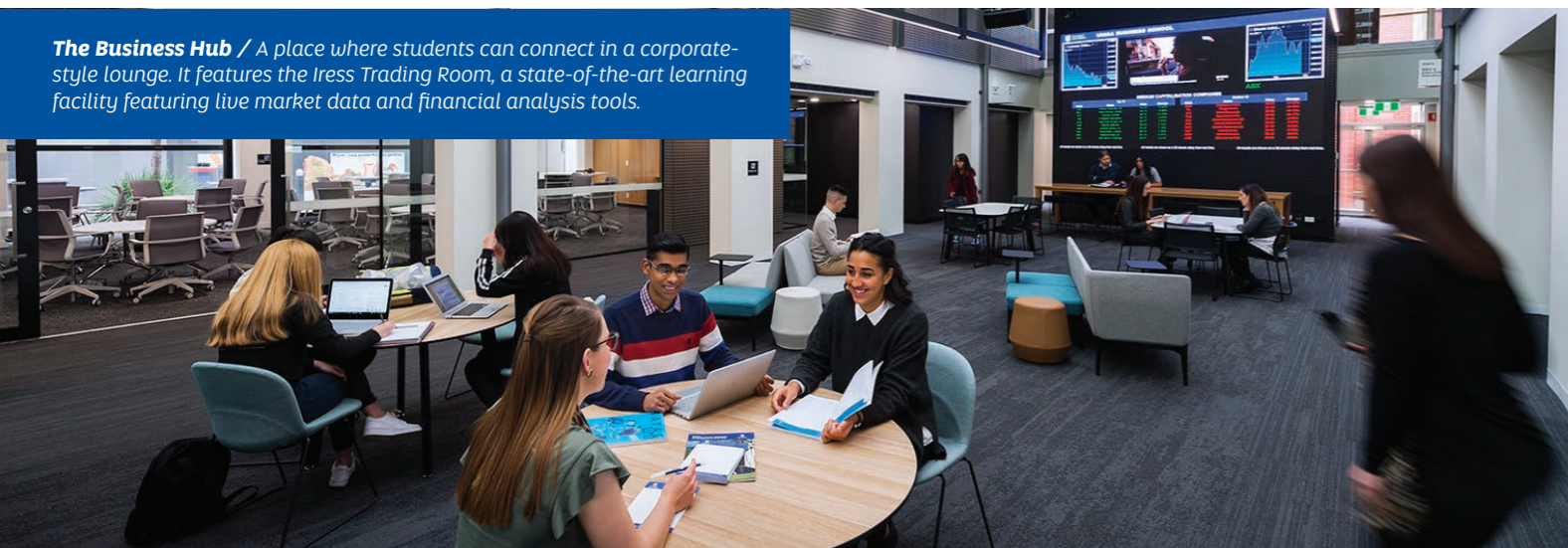
Study in modern, purpose-built facilities across all our campuses. Learn with the latest industry-standard tools and technologies that help you get career ready from day one.

Benefit from our innovative laboratories, community clinics, creative studios, collaborative learning areas and simulation spaces.

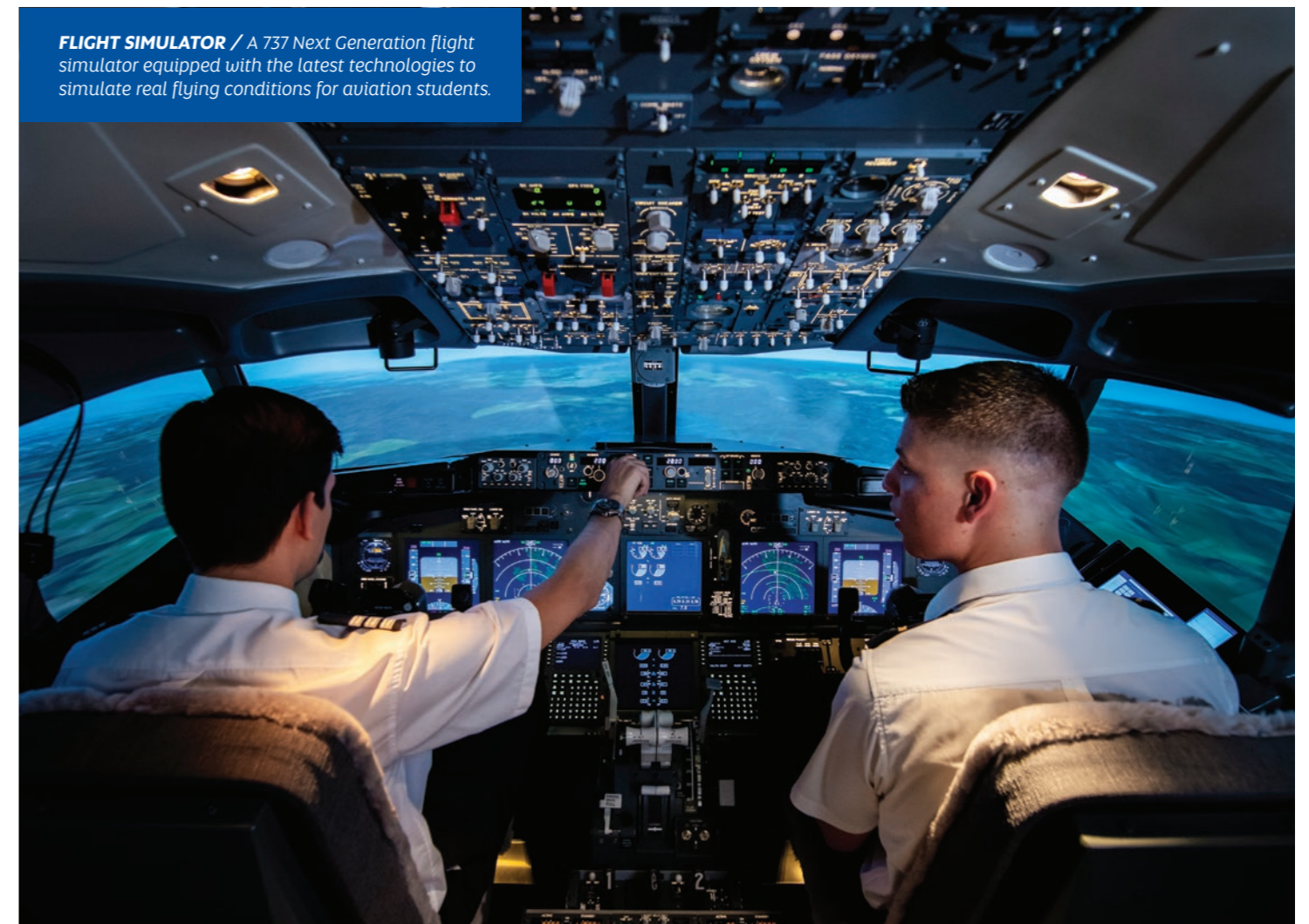


**SCAN THE QR CODE TO TAKE A VIRTUAL CAMPUS TOUR**

[unisa.edu.au/virtualcampustours](https://unisa.edu.au/virtualcampustours)



**The Business Hub** / A place where students can connect in a corporate-style lounge. It features the Iress Trading Room, a state-of-the-art learning facility featuring live market data and financial analysis tools.



**FLIGHT SIMULATOR** / A 737 Next Generation flight simulator equipped with the latest technologies to simulate real flying conditions for aviation students.



**Horizon Hospital and Health Service (HHHS)** / A unique space modelled on real-world settings, providing nursing and midwifery students with vital experience in a clinician-led simulated health environment.



# ARCHITECTURE, PLANNING AND DESIGN

Express yourself through creative practice and learn from professional architects, designers and researchers who are leaders in their field. Access a range of purpose-built spaces on campus, including practical design studios and workshops fitted with all the tools you need and the latest industry-standard technologies.

- > Architecture
- > Design and Marketing
- > Graphic and Communication Design
- > Illustration and Animation
- > Industrial Design
- > Interior Architecture
- > Product Design
- > Sustainable Design
- > Urban and Regional Planning



## #1 IN AUSTRALIA FOR GRADUATE SKILLS IN ARCHITECTURE

ComparED (QILT) Student Experience Survey 2021-22, Architecture and Built Environment – Skills Development Indicator (Postgraduate). Public universities.

# BUSINESS

Join one of Australia's premier universities for business, recognised nationally and internationally for its quality education, career outcomes and research. Graduate with the knowledge and skills to become a leader for change and growth, creating lasting impact in businesses and communities.

- > Accounting
- > Digital Business
- > Economics, Finance and Trade
- > Financial Planning
- > Human Resource Management
- > Innovation and Entrepreneurship
- > International Business
- > Logistics and Supply Chain Management
- > Management
- > Marketing
- > Property
- > Real Estate Practice
- > Sport and Recreation Management
- > Tourism, Event and Hospitality Management



UniSA Business is AACSB and EFMD (EQUIS) accredited.



## UniSA BUSINESS IS IN THE TOP 1% WORLDWIDE

UniSA Business is one of just 13 institutions in Australia and approximately 200 globally (from over 25,000 universities) to be EQUIS accredited. EFMD, March 2024.

# EDUCATION AND TEACHING

Build a career as a teacher, ranging from childhood education through to adult learning, and help shape the minds of future generations. Gain practical teaching and learning experience through professional placements and access the latest in teaching technologies on campus.

- > Digital Learning
- > Early Childhood
- > Educational Leadership
- > Inclusive Education
- > Languages and Literacy
- > Primary
- > Secondary
- > TESOL

**WORLD TOP 150  
IN EDUCATION**

2024 THE Subject Rankings.



**TOP 10 IN AUSTRALIA FOR  
GRADUATE SKILLS IN ENGINEERING**

Ranked #8, ComparED (QILT) Student Experience Survey 2021-22, Skills Development Indicator (Postgraduate), Public universities.



# ENGINEERING, CONSTRUCTION AND AVIATION

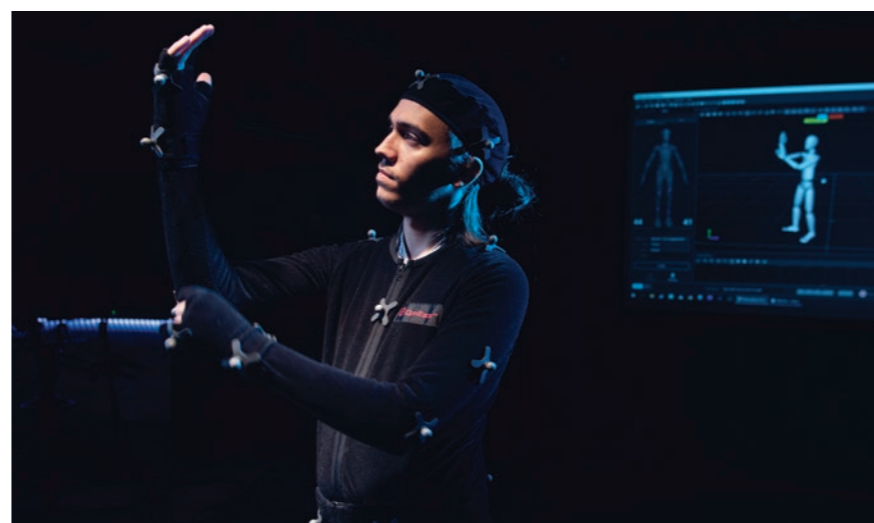
Turn ideas into action and prepare for a career in engineering, construction or aviation. Build strong foundations by studying construction management, develop smarter solutions by exploring diverse areas of engineering or discover airport operations and flight training through our aviation degrees.

- > Aviation
- > Construction Management
- > Engineering
  - Advanced Manufacturing
  - Civil
  - Electrical
  - Electronic
  - Mechanical
  - Mechatronic
  - Structural

# FILM, TV, VFX, CREATIVE AND COMMUNICATIONS

Express yourself through creative practice and learn from professionals and researchers who are leaders in their field. Access a range of purpose-built spaces on campus, including practical design studios and workshops fitted with all the tools you need and the latest industry-standard technologies.

- > Communication and Media
- > Creative Industries
- > Film and Television
- > Journalism and Writing
- > Visual Arts
- > Visual Effects (VFX)



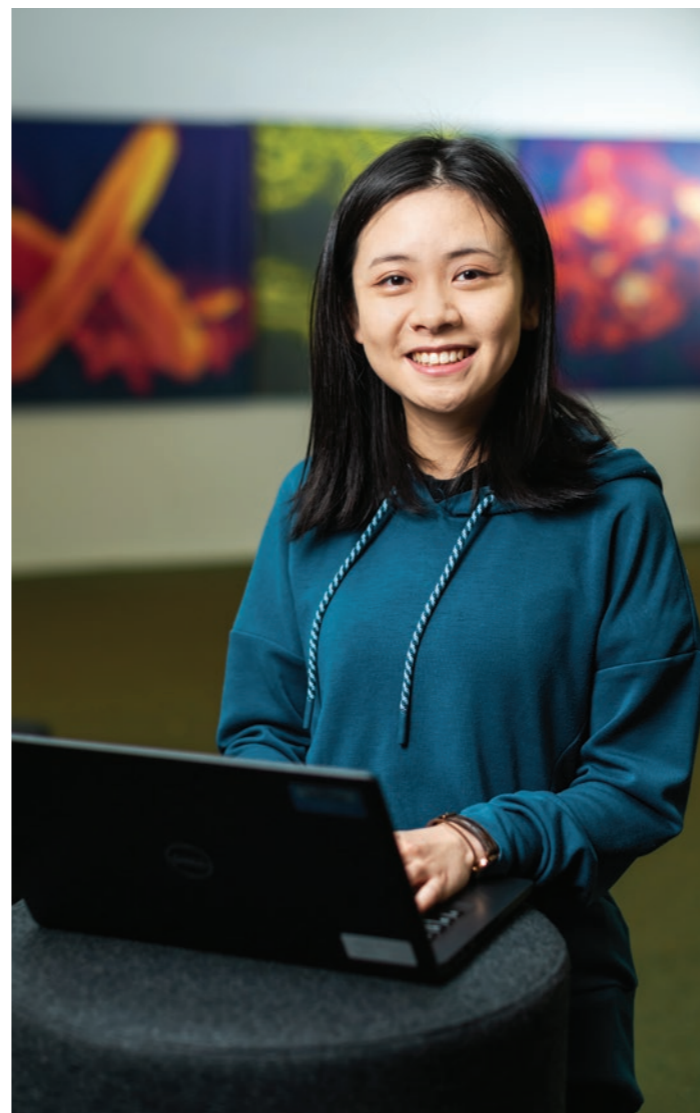
## TOP 5 IN AUSTRALIA FOR ART AND DESIGN FACILITIES

Ranked #3, ComparED (QILT) Student Experience Survey 2021-22, Creative Arts – Learning Resources Indicator (Postgraduate), Public universities.

# INFORMATION TECHNOLOGY, SCIENCE AND MATHEMATICS

Build practical and theoretical knowledge across diverse fields and take advantage of cutting edge facilities fitted with the latest technologies and software. Prepare for your career by partnering with industry on real-world projects and create a better world through new discoveries.

- > Cyber Engineering
- > Data Science
- > Environmental Science
- > Industrial and Applied Mathematics
- > Information Management
- > Information Technology
  - Games Design
  - Networking and Cybersecurity
  - Software Development
- > Science
- > Software Engineering



## TOP 10 IN AUSTRALIA FOR GRADUATE SKILLS IN I.T.

Ranked #8, ComparED (QILT) Student Experience Survey 2021-22, Computing and Information Systems – Skills Development Indicator (Undergraduate), Public universities.

# LAW AND CRIMINAL JUSTICE

Study at a university recognised on a global scale for its education in law. Learn the art of reasoning, analysis, negotiation, advocacy, professional reporting and communication. Take advantage of practical learning opportunities in our moot court and public-facing Legal Advice Clinic.

- > Criminal Justice
- > Law
- > Law double degrees paired with:
  - Accounting
  - Arts
  - Economics
  - History and Global Politics
  - Human Resource Management
  - Journalism
  - Management
  - Marketing
  - Psychology
  - Sport and Recreation Management
  - Tourism, Event and Hospitality Management

## #1 IN SOUTH AUSTRALIA FOR QUALITY EDUCATION IN LAW

Compared (QILT) Student Experience Survey 2021-22, Law and Paralegal Studies – Overall Quality of Educational Experience Indicator (Undergraduate). Public universities.



## TOP 5 IN AUSTRALIA FOR QUALITY EDUCATION IN HEALTH

Ranked #5, ComparED (QILT) Student Experience Survey 2021-22, Health Services and Support – Overall Quality of Educational Experience Indicator (Undergraduate). Public universities.



# NURSING, HEALTH AND MEDICAL SCIENCES

Play an important role in shaping the wellbeing of communities as a dynamic health professional. Benefit from interactive learning, highly experienced clinicians and teaching staff, along with practical placement opportunities. Access purpose-built facilities on campus, including simulated hospital and health service environments where you can learn alongside industry experts.

- > Biomedical Science
- > Clinical Exercise Physiology
- > Exercise and Sport Science
- > Health Services Management
- > Human Movement
- > Laboratory Medicine
- > Medical Radiation Science
- > Midwifery
- > Nursing
- > Nutrition and Food Sciences
- > Occupational Therapy
- > Outdoor and Environmental Leadership
- > Pharmaceutical Science
- > Pharmacy
- > Physiotherapy
- > Podiatry
- > Public Health
- > Speech Pathology

# PSYCHOLOGY, SOCIAL WORK AND HUMAN SERVICES

Pursue a career that helps empower individuals and creates more socially engaged communities. Explore the connections between the brain and behaviour, the meaning behind human interactions and the broader social sciences. Learn in purpose-built facilities on campus including our Social Work and Human Services studio.

- > Ageing and Disability
- > Arts
- > Cognitive Neuroscience
- > Counselling
- > Human Services
- > Psychology
- > Social Work



## TOP 10 IN AUSTRALIA FOR GRADUATE SKILLS IN PSYCHOLOGY

Ranked #7, ComparED (QILT) Student Experience Survey 2021-22, Skills Development Indicator (Undergraduate). Public universities.

# RESEARCH AT UniSA

Our research is inspired by challenges. We produce new knowledge that provides real solutions for industry, businesses and the wider community. Our researchers are thought leaders and change makers. We have big ideas and we ask big questions. We translate our discoveries into solutions that benefit our economy and society.

[unisa.edu.au/research](https://unisa.edu.au/research)

## RESEARCH DEGREES

Completing a research degree means becoming an expert in your field. It is your opportunity to take a topic that interests you, explore it in depth, tackle intellectual, creative and practical challenges, and communicate your findings.

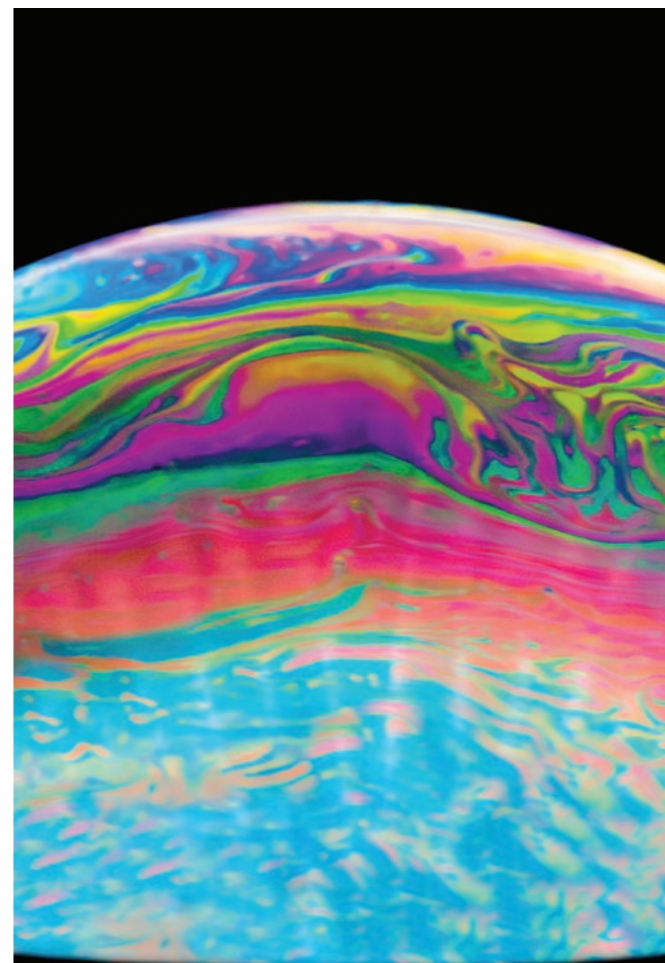
## HOW TO APPLY

1. Check your eligibility
2. Find a research project
3. Organise referee reports
4. Prepare to apply
5. Apply online



[unisa.edu.au/research-degrees-apply](https://unisa.edu.au/research-degrees-apply)

Right: Images of Research and Teaching Competition 2023, Beyond the Horizon of a Nano-World by Dr Paul Joyce



## WORLD TOP 100 FOR INDUSTRY RESEARCH INCOME AND PATENTS

Ranked equal #83, 2024 THE World University Rankings.



## UniSA Enterprise Hub

The UniSA Enterprise Hub is home to our research portfolio, including our research degrees. It is an online gateway and physical shopfront in Adelaide's CBD, where industry can directly connect with our researchers, educators and students on activities that solve real problems, drive progress, and shape business and community growth in South Australia and beyond.

[unisa.edu.au/enterprisehub](https://unisa.edu.au/enterprisehub)

# TRANSNATIONAL EDUCATION

*Our long history of transnational education has been a central part of the University's internationalisation strategy since its inception. As a globally focused institution, our transnational education footprint stretches across the Asia Pacific. Building on our investment in digital learning, we are reshaping our approach towards one that prioritises sustainability and diversity. This approach will be offered through new modes of delivery and support.*

## HONG KONG MANAGEMENT ASSOCIATION (HKMA)

UniSA's partnership with HKMA offers students the chance to study UniSA's Master of Business Administration in Hong Kong. Also available at HKMA is the Graduate Certificate in Business Administration.

[hkma.org.hk](https://hkma.org.hk)

## AN DE COLLEGE

An De College is a joint collaboration between Xi'an University of Architecture and Technology (XAUAT) and UniSA, which is endorsed and approved by the Chinese Ministry of Education. Currently offering six degrees – four undergraduate and two postgraduate, the college gives students the option to start their degree in China and finish in Adelaide.

[ande.xauat.edu.cn/english.htm](https://ande.xauat.edu.cn/english.htm)



## GO FURTHER WITH UniSA

### STUDENT EXCHANGE AND GLOBAL OPPORTUNITIES

*Start your degree at UniSA and then participate in one of our global programs where you can study while travelling the world.*

We offer a range of international experiences including semester long student exchanges, study tours, short term study and virtual opportunities. Earn credit towards your degree while discovering new ways to learn and access our network of prestigious international partners.

- › Explore the world
- › Experience different cultures
- › Make lifelong friends
- › Develop your global networks
- › Enhance your resume
- › Boost your future career

As a UniSA student you can apply for a range of global opportunities as part of your UniSA degree:

- › Student exchange
- › Study tours
- › International summer/winter schools
- › International internships
- › Virtual cultural programs
- › And more!

[unisa.edu.au/globalopportunities](https://unisa.edu.au/globalopportunities)

# WELCOME TO ADELAIDE

The University of South Australia is located in Adelaide - Australia's education city and the state capital of South Australia.

As a welcoming and multicultural city, Adelaide is the ideal home away from home.



**ADELAIDE IS ONE OF THE WORLD'S MOST LIVEABLE CITIES**

Ranked equal #12, 2023 Economist Intelligence Unit's Global Liveability Index.

**UniSA CITY EAST CAMPUS**

**ADELAIDE OVAL**

10 minute walk to City West campus

**RUNDLE MALL**

5 minute walk to City East campus

**RAILWAY STATION**

5 minute walk to City West campus

**ADELAIDE CENTRAL MARKET & CHINA TOWN**

15 minute walk to City West campus

**UniSA BRADLEY BUILDING**

**UniSA CITY WEST CAMPUS**

**ROYAL ADELAIDE HOSPITAL**

10 minute walk to City West campus

◀ **UniSA MAGILL CAMPUS**  
22 minutes from city by bus



▼ **UniSA MAWSON LAKES CAMPUS**  
17 minutes from city by express train



**GLENELG BEACH** ▶  
30 minutes from city by tram



# DISCOVER ADELAIDE

Adelaide is a cultural destination with many different nationalities, foods, festivals and events. It is home to some of the country's best beaches, wine regions and parklands.

Adelaide is a city shaped by stories. The first of these stories were created by the Kaurna people of the Adelaide Plains, which remain alive today and are interwoven with the stories of all the people who choose to live, work and study in Adelaide. The city is a celebration of diversity and inclusion with a strong sense of community.

## MULTICULTURAL

Almost one in four people in South Australia were born overseas with ancestry tracing back to more than 120 countries. Australia also has a democratic system of government and is accepting of different religious beliefs.

## ACCESSIBLE

Adelaide offers all the advantages of big city life but is still easy enough to get around. By car, it takes just 15 minutes to travel from the airport to the city and 20 minutes from the city to the beach or hills.

## AFFORDABLE

Adelaide has one of the highest standards of living in the world yet is one of the least expensive. This means more money to spend on food, accommodation, supplies, travel and entertainment.

## FAST FACTS

- Capital city** / Adelaide
- Metropolitan population** / 1.3 million
- Language** / English
- Currency** / AUD\$



Study Adelaide is an official Government website for students, providing information about studying, living, working and having fun in Adelaide. You can also access a free Student Advisory Accommodation Service to help you find your new home.

🌐 [studyadelaide.com](https://www.studyadelaide.com)



① Kayaking at Port Willunga Beach



② Shopping at the Adelaide Central Market



③ WOMA Adelaide festival



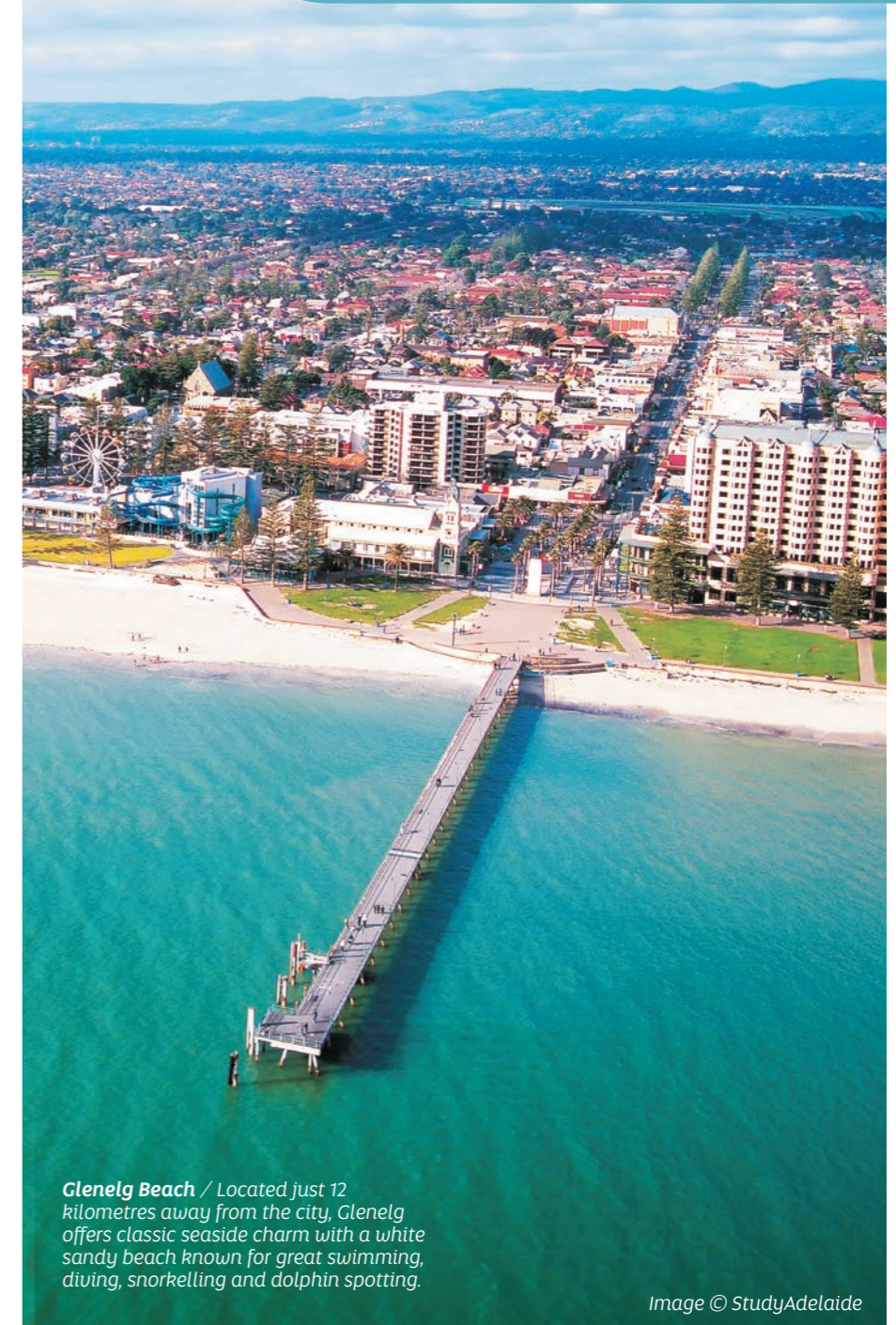
④ Adelaide Oval



**ADELAIDE IS ONE OF THE MOST SUSTAINABLE DESTINATIONS WORLDWIDE**  
Ranked #6, 2022 National Geographic Best of World.



**ADELAIDE IS UP TO 12% MORE AFFORDABLE THAN SYDNEY AND UP TO 11% MORE AFFORDABLE THAN MELBOURNE**  
2022 EIU Cost of Living Survey.



**Glenelg Beach** / Located just 12 kilometres away from the city, Glenelg offers classic seaside charm with a white sandy beach known for great swimming, diving, snorkelling and dolphin spotting.

Image © StudyAdelaide



# YOUR CAMPUS

Learn more about our modern campuses and their focus areas, discover our purpose-built teaching and learning facilities and find out what makes UniSA a great place to study and research.



SCAN THE QR CODE TO TAKE A VIRTUAL CAMPUS TOUR

[unisa.edu.au/virtualcampustours](https://unisa.edu.au/virtualcampustours)



**4**  
METROPOLITAN  
CAMPUSES

**2**  
REGIONAL  
CAMPUSES

**City West Campus** is located on the western edge of the CBD. This campus features state-of-the-art facilities, including the multi-award winning Jeffrey Smart Building and Pridham Hall – complete with a graduation space, sports complex and swimming pool. It is home to our wide range of degrees in business, law, art, architecture, planning and design.



**City East Campus** is located along North Terrace in the city's East End. It is home to our health and medical science degrees and includes impressive learning facilities like custom laboratories, simulated hospital and health environments, along with community clinics.

**Mawson Lakes Campus** is located near more than 100 high-tech companies that make up Technology Park – an innovation hub in Adelaide's northern suburbs. This campus is home to immersive virtual teaching environments, and laboratories focused on robotics, augmented reality, geotechnical engineering, and more.



**Magill Campus** is located in the lush foothills of Adelaide's eastern suburbs and is known for its green outdoor spaces. It is home to industry-standard learning facilities for students studying education, creative industries, psychology, social work, and human services. It also boasts the technology-driven Samsung SMARTSchool for training future teachers.



# STUDENT FRIENDLY

Adelaide is the ideal study location. With free Wi-Fi, free tram and bus services throughout the city centre, it is a truly student city.

## JUMP ON A FREE CITY TRAM

If you need to travel between City West and City East campuses, then jump on the free tram service that runs every 10 minutes. The free tram will also take you to the Adelaide Central Market, Adelaide Railway Station, Royal Adelaide Hospital, Adelaide Botanic Garden and Rundle Mall shopping district.

## RIDE YOUR BIKE OR SCOOTER

Adelaide is known for its bicycle culture, so we encourage students to ride their bikes, or scooters, to and from campus. Each campus has shower facilities and secure storage areas.

## BONUS SAVINGS

As an international student in Adelaide, you will be offered the same public transport discounts as local students, saving you hundreds of dollars every year. You can also work while studying.\*

🔗 [homeaffairs.gov.au](https://homeaffairs.gov.au)

\*There are work restrictions for student visa holders, please refer to the Department of Home Affairs website for more information.

**ADELAIDE IS ONE THE WORLD'S TOP 35 BEST STUDENT CITIES**

Adelaide ranked #31, QS Best Student Cities 2023.



## COMFORTABLE CLIMATE

Adelaide has a Mediterranean climate with hot, dry summers and mild winters.



**Summer**  
December - February  
25°C - 35°C  
Hot & dry



**Autumn**  
March - May  
20°C - 25°C  
Mainly dry



**Winter**  
June - August  
10°C - 15°C  
Cool & wet



**Spring**  
September - November  
20°C - 25°C  
Sunny & showers



# ACCOMMODATION

Adelaide has a variety of accommodation options to suit your budget and lifestyle. We also have a dedicated Accommodation Service with support staff who can help you make the right choice.

- › Student Hostels
- › Homestay
- › Student Apartments
- › Private Rental
- › Residential Colleges

## SCAPE AT UniSA

UniSA student accommodation, Scape at UniSA, is located within easy reach of city and metro campuses, as well as close to CBD transport, shopping and entertainment precincts.



## UniSA RENTAL DATABASE

Searching for a room in a share-house or looking for a whole property to rent? Take a look at UniSA's Rental Database to explore your options.

🔗 [unisa.studystays.com.au](https://unisa.studystays.com.au)

## TEMPORARY ACCOMMODATION

If you have not finalised your long-term accommodation, make sure you arrange temporary accommodation before arriving in Adelaide. Plan to arrive two weeks before the start of your degree to allow enough time to select accommodation and get settled.

## UNDER THE AGE OF 18?

Please note that students under 18 years of age are eligible only for the Adelaide Student Lodge (ASL) or homestay accommodation options (organised by SAIIB or Eynesbury).



SCAN THE QR CODE TO EXPLORE YOUR ACCOMMODATION OPTIONS

For personalised advice contact:

+61 8 8302 0877

[accommodation@unisa.edu.au](mailto:accommodation@unisa.edu.au)

🔗 [unisa.edu.au/accommodation](https://unisa.edu.au/accommodation)



# ADMISSION INFORMATION

UniSA International Admissions is our friendly and professional team, processing applications and answering questions on entry requirements, degree information, applications, acceptances, payments and Confirmation of Enrolments.

ANY QUESTIONS? Contact us at [unisa.edu.au/enquire](https://unisa.edu.au/enquire) or phone +61 8 8302 0114



ADMISSION .....	35
INFORMATION FOR INTERNATIONAL HIGH SCHOOL STUDENTS .....	36
ENGLISH LANGUAGE REQUIREMENTS .....	38
UNDERGRADUATE ADMISSION BY COUNTRY/REGION .....	40
UNDERGRADUATE PATHWAY OPTIONS .....	42
HOW TO APPLY .....	44
UNDERGRADUATE DEGREES OFFERED IN 2025 .....	46
POSTGRADUATE DEGREES OFFERED IN 2025 .....	50
SCHOLARSHIPS .....	52

## ADMISSION

### Undergraduate

Here is what you need:

- › An Australian Year 12 or equivalent international program; OR
- › A recognised Pathway or Foundation Studies program; OR
- › A SAIBT, Eynesbury, TAFE SA or other recognised tertiary pathway program.

### Postgraduate

Here is what you need:

- › An undergraduate degree, to the required standard, from a recognised higher education institution in Australia or the international equivalent; AND/OR
- › The equivalent professional work experience.

### Get the credit you deserve!

Have you...

- › Completed previous studies at university; OR
- › Studied a diploma program or post-secondary qualification; OR
- › Gained work experience in a relevant area?

You may be eligible to receive study credit, exemptions or advanced standing towards your degree.

To check your eligibility, visit [creditassessor.unisa.edu.au](https://creditassessor.unisa.edu.au). Please include course outlines from your previous studies when you submit an application. It is important to submit course outlines, even if your qualification is listed on our Credit Assessor.

### Scholarships

Scholarships and grants are a great way to help support your studies at university. Learn more about what is on offer at UniSA on page 52 of this guide.

# INFORMATION FOR INTERNATIONAL HIGH SCHOOL STUDENTS

## UniSA GUARANTEED ENTRY

Through UniSA Guaranteed Entry, you will automatically receive an offer if you meet the guaranteed Selection Rank. You can also get guaranteed entry based on your three best Year 12 subject grades for most degrees. If you achieve the grades, along with any prerequisites, you will receive an offer for all eligible preferences.

[unisa.edu.au/Year-12](https://unisa.edu.au/Year-12)

## UniSA ACCELERATE

If you are a Year 11 student living in South Australia (including onshore international students), you can apply for the UniSA ACCELERATE program, meaning you can get an early start on your university studies during Year 12. Study up to two courses, fully funded by a UniSA scholarship through UniSA Online while you're in Year 12. You can also choose to count this study towards your SACE Stage 2. As a minimum, applicants must obtain a band of 6.0 on the International English Language Testing System (IELTS) for entry or a B grade in SACE Stage 1 English.

[unisa.edu.au/accelerate](https://unisa.edu.au/accelerate)

## HOW TO APPLY

*Australian Year 12 programs (Australia and offshore)*



### 1. Find the best degree for you

- > You can apply for up to six degrees

[satac.edu.au/undergraduate](https://satac.edu.au/undergraduate)



### 2. Check the entry/admission requirements

- > Entry is determined by a Selection Rank score, which is your Australian Tertiary Admissions Rank (ATAR), including any Adjustment Factors
- > Adjustment Factors are automatically processed by SATAC and based on any eligible subjects you passed in Year 12 (see next column for more information)



### 3. Apply via SATAC

- > Apply through the South Australian Tertiary Admissions Centre (SATAC)
- > Applications open in August and close early December (however you can still apply through SATAC until early January)

[satac.edu.au/undergraduate](https://satac.edu.au/undergraduate)



### 4. Application assessment/accept your offer

- > The first offer round is in December (shortly after Year 12 results are released) with further offer rounds in January
- > You will also receive offers from the University for all your eligible preferences. You will need to respond to the University as soon as possible to secure your place in your offered degree

## Other International High School Programs

If you are studying an international high school program outside of Australia, you may still be eligible for direct entry to UniSA. Please follow the steps on pages 44-45 to find out how to apply for your degree.

## Adjustment factors for students of Australian Year 12 programs

Adjustment factors are automatically processed by the South Australian Tertiary Admissions Centre (SATAC) based on eligible subjects students passed in Year 12.

### UNIVERSITIES LANGUAGE, LITERACY AND MATHEMATICS SCHEME

All eligible students will be awarded 2 points, up to a total maximum of 4 points, for successfully completing a subject in any one of these categories:

- > 20 credits of a LOTE in the Languages Learning Area
- > 2ELS20 English Literary Studies or 2ESH20 English
- > 2MHS20 Mathematical Methods or
- > 2MSC20 Specialist Mathematics

### UNIVERSITIES EQUITY SCHEME

Students of certain specified schools in SA/NT will be awarded five adjustment points. The list of eligible schools can be found on the SATAC website and is updated annually.

[satac.edu.au/adjustment-factors](https://satac.edu.au/adjustment-factors)

### ENGLISH LANGUAGE REQUIREMENTS

For 2024, the following SACE subjects or their interstate/international equivalents will be considered acceptable 'Year 12 English subjects':

- > English Literary Studies
- > English
- > Essential English
- > English as an Additional Language

### ENGLISH LANGUAGE ENTRY REQUIREMENTS FOR AUSTRALIAN YEAR 12, SAT, IB QUALIFICATIONS AND UK BOARD GCE A LEVELS

Students who have successfully completed Australian Year 12, SAT, IB, or UK Board GCE A Levels can satisfy degree language requirements by obtaining a passing grade (C-) in the relevant English language subject unless the applicant requires an objective English test as part of their student visa application.

Please note this does not apply to students who are applying for the following degrees which require an objective English language test score:

- > Bachelor of Nursing (IBNU)
- > Bachelor of Midwifery (IBMW)
- > Bachelor of Speech Pathology (Honours) (IHSP)

For full degree English entry requirements please visit: [unisa.edu.au/english-language-requirements](https://unisa.edu.au/english-language-requirements)

# ENGLISH LANGUAGE REQUIREMENTS

Please review the minimum English language requirements for our degrees. These are provided as a guide only and we recommend you check specific scores for each degree.

[unisa.edu.au/english-language-requirements](https://unisa.edu.au/english-language-requirements)

Undergraduate	Postgraduate
<b>ENGLISH LANGUAGE TEST SCORES</b>	
English language test results are generally valid for two years prior to your date of commencement at UniSA	
<b>IELTS (International English Language Testing System) (Academic)</b>	
6.0 overall with a 6.0 in Reading and Writing	6.5 overall with a 6.0 in Reading and Writing
<b>Cambridge B2 First/C1 Advanced/C2 Proficiency</b>	
169 overall with a 169 in Reading and Writing	176 overall with a 169 in Reading and Writing
<b>TOEFL (Test of English as a Foreign Language) iBT (internet-based test)</b>	
60 overall with 13 in Reading and 21 in Writing	79 overall with 13 in Reading and 21 in Writing
<b>PTE (Pearson Test of English) Academic</b>	
50 overall with a 50 in Reading and Writing	58 overall with a 50 in Reading and Writing
<b>ENGLISH LANGUAGE PROGRAM SCORES</b>	
<b>CELUSA</b>	
Successful completion of the Centre for English Language at the University of South Australia (CELUSA) Academic English Program	
Level 4	Level 5
Other qualifications may be accepted	
<b>ENGLISH AS AN OFFICIAL LANGUAGE</b>	
Applicants from countries where English is an official language, or who have recent study experience in an English setting, may be eligible to use this to meet the English language proficiency requirement. This can include particular educational institutions within a non-English speaking country where English is the language of instruction. Certified documentation is required. We will consider all applications on a case-by-case basis and please note this is not applicable to all programs.	



## Centre for English Language (CELUSA)

- › The Centre for English Language at the University of South Australia (CELUSA), located at UniSA's City West campus, delivers high quality Academic English programs designed to prepare students from non-English speaking backgrounds for university study.
- › CELUSA is suited to both undergraduate and postgraduate applicants who do not meet the University's English language entry requirements and offers Academic English (AE) language preparation programs.
- › Students who are eligible for, and successfully complete, an AE program (at an appropriate level) will be able to commence their studies at UniSA or a pathway program through SAIBT.

[international.unisa.edu.au/celusa](https://international.unisa.edu.au/celusa)

CRICOS provider code: O2193C  
TEQSA Provider ID: PRV12102

## CELUSA intake dates for 2025

SEMESTER	2025	TERM
CC2501	6 Jan - 7 Feb	Module 1, Term 1
CC2502	10 Feb - 14 Mar	Module 2, Term 1
CC2503	17 Mar - 17 Apr	Module 3, Term 1
1 week holiday		
CC2504	28 Apr - 30 May	Module 4, Term 2
CC2505	2 Jun - 4 Jul	Module 5, Term 2
2 weeks holiday		
CC2506	21 Jul - 22 Aug	Module 6, Term 3
CC2507	25 Aug - 26 Sep	Module 7, Term 3
1 week holiday		
CC2508	7 Oct - 7 Nov	Module 8, Term 4
CC2509	10 Nov - 12 Dec	Module 9, Term 4

Language requirements for UniSA program entry and those of external bodies/entities may differ. Additional English language evidence may be needed to satisfy requirements of external bodies, including the Department of Home Affairs. Applicants must make themselves familiar with these additional requirements.

## UNDERGRADUATE ADMISSION REQUIREMENTS BY COUNTRY/REGION

Country/region	Qualifications	Minimum entry requirements
Australia	Year 12 OR Foundation Studies program OR a diploma OR equivalent	Year 12: Selection Rank (ATAR) of at least 65, see Note 3 Students may also be admitted based on Year 12 subject grades, see Note 4 Foundation Studies: assessed on a case-by-case basis
Argentina	Bachillerato	See Note 1
Bangladesh	Higher Secondary Certificate	Minimum Grade Point Average (GPA) of 3.5 out of 5
Bhutan	Bhutan Higher Secondary Education Certificate (BHSEC) OR Indian Higher Secondary School Certificate (10+2)	Aggregate of at least 60% in best four subjects (excluding any local languages)
Botswana	UK Board GCE A Levels	See Note 2
Brazil	Ensino Secundário Sênior	See Note 1
Brunei	UK Board GCE A Levels	See Note 2
Cambodia	Cambodian Baccalaureate/Diploma of Upper Secondary Education	See Note 1
Canada	Secondary School Certificate/Diploma	Each province/territory has its own High School Certificate and is assessed individually.
	Ontario Secondary School Diploma (OSSD)	Minimum of 60% in best six Grade 12 University Preparation 4U courses or 4M University/College Preparation courses
Chile	Licencia de Educación/Enseñanza Media	See Note 1
China, People's Republic of	National University Entrance Exam (Gaokao) Senior Middle Three	Minimum 60% Gaokao result See Note 1
Colombia	Bachiller/Bachillerato Académico	See Note 1
Denmark	Bevis for Højere Forberedelseseksamen or Bevis for Studentereksamen	Minimum Grade Point Average (GPA) of 02 for both year's study and exams
Ecuador	Titulo de Bachiller	See Note 1
Egypt	General Secondary Education Certificate	See Note 1
Fiji	7th Form Fiji School Leaving Certificate OR 6th Form Certificate plus one year of undergraduate study OR the University of the South Pacific Foundation Year	Assessed on a case-by-case basis
Finland	Ylioppilastutkinto/Studentexamen (Matriculation Examination)	Minimum Grade Point Average (GPA) of 3 out of 7
France	Diplome du Baccalaureate General OR Technologique	Minimum Grade Point Average (GPA) of 10 out of 20
Germany	Zeugnis der Allgemeinen Hochschulreife/Abitur	Minimum Grade Point Average of 3.8 out of 6
Ghana	GCE A Levels	See Note 2
	West African Senior School Certificate (WASSC)	WASSC with an overall score of 18 or less based on the best six subjects
Hong Kong SAR	HKDSE	Minimum of 15 points in HKDSE best of five subjects (Category A only) from any core or elective subject combination where Level 5**=6pts, 5*=5.5, 5=5, 4=4, 3=3, 2=2, 1=1. Minimum Level 2 is required for core subjects. Specific subject requirements apply for specified programs
Iceland	Stúdentspróf (Academic) (Matriculation Certificate)	Minimum Grade Point Average (GPA) of 6 out of 10
India	All India Senior School Certificate, Indian School Certificate, Higher Secondary School Certificate, Senior Secondary School Certificate, Intermediate Certificate, Pre-University Certificate	Successful completion of Senior Secondary Certificate (10+2) with an average of at least 60% (from the Central Board) or 70% (from an acceptable State Board) in the best four subjects, excluding all local languages and non-academic subjects
Indonesia	SMA 3 plus the National Exam	Satisfactory completion of the Secondary School Certificate of Graduation (SKHUN/STK) with an average score of 65% across all subjects from Years 10-12, excluding all local language and non-academic subjects
International Baccalaureate (IB) Diploma	IB	Minimum of 24 points in best six subjects
Iran	Pre-University Certificate, National High School Diploma	See Note 1
Ireland	GCE A Levels	See Note 2
Italy	Diploma di Esame di Stato	Minimum Grade Point Average (GPA) of 60 out of 100
Japan	Upper Secondary Leaving Certificate	Minimum average of 80%
Jordan	General Secondary Education Certificate	See Note 1
Kenya	Kenyan Certificate of Secondary Education (KCSE)	Grade average of B
	UK Board GCE A Levels	See Note 2
Korea, Republic of	Senior High School Diploma	See Note 1
Kuwait	General Secondary Education Certificate OR General Secondary School Certificate	Minimum 70% with higher requirements for some degrees
Laos	Laos Baccalaureate OR Upper Secondary School Diploma	See Note 1
Macau SAR	GCE A Levels	See Note 2
Malaysia	Malaysian Matriculation (Matrikulasi)/STPM	Minimum of 6 points in STPM and Matrikulasi calculation (best 3) where A or A-=5pts; B+=4; B=3; B- or C+=2; C=1. Add the points scored for best of three courses attempted at one examination, not including the Islamic and Moral Study subjects for Matrikulasi or the General Paper for Matrikulasi and STPM
	UEC	Minimum of 32 points in UEC calculation (best 5) where A1=1pt; A2=2; B3=3; B4=4; B5=5; B6=6; C7=7; C8=8. Aggregate should not include Chinese or Bahasa Malaysia and/or General Paper
	GCE A Levels	GCE A Level (see Note 2)

Country/region	Qualifications	Minimum entry requirements
Maldives	UCLES A Levels/HSC	See Note 2
Mauritius	GCE A Levels	See Note 2
Mexico	Título Académico de Bachiller/Diploma de Bachiller/Bachillerato General	See Note 1
Myanmar	Myanmar Matriculation/Basic Education High School (BEHS) Examination	See Note 1
Nepal	National Examinations Board Certificate	Successful completion of Class XII with a minimum Grade Point Average (GPA) of 2.41 out of 4
Netherlands	Voorbereidend Wetenschappelijk Onderwijs (VWO) (Gymnasium A/B and Atheneum A/B) Diploma	Minimum Grade Point Average (GPA) of 6 out of 10
New Zealand	National Certificate of Educational Achievement (NCEA)	Equivalent of eligibility to enter a New Zealand university with the required score equivalent to Australian Selection Rank (ATAR) of 65 or above, see Note 3
Nigeria	Senior School Certificate (SSC) or West African Senior School Certificate (WASSC)	Successful completion of either the SSC or WASSC with an overall score of 18 or less based on the best six subjects
Norway	Vitnemål fra den videregående skole (Leaving Certificate from Upper Secondary School)	Minimum Grade Point Average (GPA) of 2.8
Oman	General Education Diploma	See Note 1
Pakistan	GCE A Levels	See Note 2
	Higher Secondary School/Intermediate Certificate	Minimum grade average of 75%
Papua New Guinea	Higher School Certificate plus 1 additional year of undergraduate study at a recognised University	Case by case assessment
Peru	Certificado de Educacion Secundaria Comun Completa	See Note 1
Philippines	Senior High School (academic stream)	Minimum of 85% (including 85% for any prerequisite subjects)
Saudi Arabia	General Secondary Education Certificate	See Note 1
Singapore	Singapore GCE A Levels	Successful completion of best three H2 Level subjects or best two H2 Level subjects plus one H1 Level subject with a minimum score of 6 points (grading scale A = 5, B = 4, C = 3, D = 2, E = 1)
South Africa	National Senior Certificate	Successful completion with a Grade Point Average (GPA) of 5 out of 7 excluding Life Orientation
Spain	Titulo de Bachiller	Case by case assessment
Sri Lanka	Sri Lankan General Certificate of Education Advanced Level	Successful completion with a minimum score of 6 (grading scale A = 5, B = 4, C = 3, S = 2). Calculation is based on the best three subjects
	GCE A Levels	See Note 2
Sweden	Avgångsbetyg/Slutbetyg från Gymnasieskola (Upper Secondary School Certificate)	Minimum Grade Point Average (GPA) of 12.5 out of 20
Taiwan ROC	Senior High School Diploma/Senior Vocational High School Diploma	Minimum average of 80% or B average
Tanzania	Advanced Certificate of Secondary Education, awarded by the National Examinations Council of Tanzania (NECTA)	See Note 2
Thailand	Mathayom VI and evidence of completion of the Certificate of Secondary Education	Case by case assessment
Turkey	High School Diploma	See Note 1
Uganda	Uganda Advanced Certificate of Education (UACE)	See Note 2
United Arab Emirates	General Secondary Education Certificate Examination (General/Religious)	See Note 1
United Kingdom	GCE A Levels	See Note 2
United States of America	US High School Diploma plus appropriate SAT, ACT or AP score	SAT minimum score of 1050. ACT and AP scores are individually assessed
Venezuela	Bachiller	See Note 1
Vietnam	Bang Tot Nghiep Trung Hoc Pho Thong (Upper Secondary School Graduation Diploma)	Minimum Grade Point Average (GPA) of 7 out of 10. Special considerations may be made for graduates of Vietnamese Gifted Schools
Zimbabwe	Zimbabwe General Certificate of Education A Levels	See Note 2

**Note 1:** Students require an additional year of study following their high school studies. This can include the successful completion of a recognised pre-tertiary program; Foundation Studies; or one year of study at a recognised tertiary or higher education institution.

**Note 2:** Students need to complete 3x A levels and have a minimum of six points for entry. Please note some programs require a higher score. The score is calculated using the best 3 subjects and can include local languages and 1 Advanced Subsidiary (AS) grade. AS grades cannot be used for any prerequisite subject/s. The scoring system is A\*=6, A=5, B=4, C=3, D=2, E=1.

**Note 3:** Selection Rank is your Australian Tertiary Admission Rank (ATAR) including any Adjustment Factors (formerly known as Bonus Points).

**Note 4:** UniSA offers guaranteed entry which will secure a place in your preferred degree through Selection Rank or Year 12 subject grades. Guaranteed entry via Year 12 grades will be based on your three best Year 12 subject grades for most of our degrees. If you achieve the selection grades, along with any prerequisites, you will receive an offer for all eligible preferences.

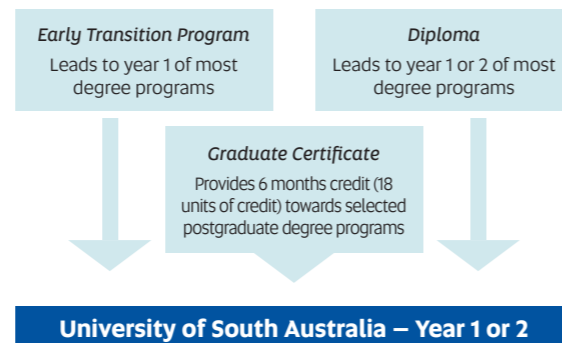
© unisa.edu.au/Year-12

For other countries not listed, please contact us at [unisa.edu.au/enquire](https://unisa.edu.au/enquire) or phone +61 8 8302 0114

# UNDERGRADUATE PATHWAY OPTIONS

There are many alternative pathways to help you enter the University of South Australia, visit our website to learn more.

[unisa.edu.au/international-pathways](http://unisa.edu.au/international-pathways)



The South Australian Institute of Business and Technology (SAIBT) offers a range of Diploma and Early Transition programs that provide entry into either first or second year of over 90 bachelor degrees at UniSA. SAIBT also offers the Graduate Certificate in Business and Management which offers entry into a range of master's degrees at UniSA.

**SAIBT programs include:**

Early Transition Program – Arts
Early Transition Program – Engineering
Early Transition Program – Health Science
Diploma of Arts
Diploma of Business
Diploma of Engineering
Diploma of Health Science
Diploma of Information Technology
Graduate Certificate in Business and Management

Located on UniSA's City East campus, SAIBT students have access to University facilities and study in a vibrant and diverse learning environment with small classes and personalised teaching.

[saibt.sa.edu.au](http://saibt.sa.edu.au)

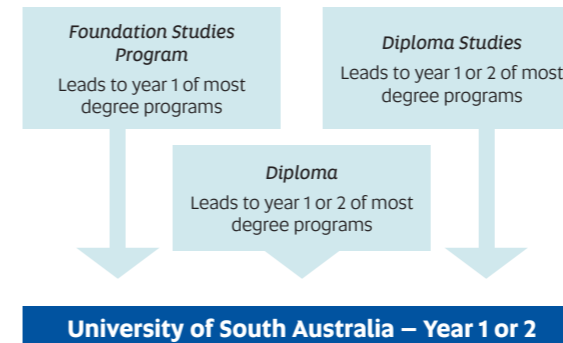
[saibt@navitas.com](mailto:saibt@navitas.com)

+61 8 8302 2021

CRICOS provider code: O2193C

TEQSA provider ID: PRV12102

Discover your SAIBT pathway today



Eynesbury College offers a range of programs that can lead into the first or second year of an undergraduate degree at UniSA.

**Eynesbury College programs include:**

English Language programs (for undergraduate and postgraduate entry)
Foundation Studies Program
Diploma Studies: Business or Computing and IT
Diploma: Business, Engineering or Computing and IT

Located in the city centre, Eynesbury College is close to our City East and City West campuses, and offers excellent teaching quality and support for students.

[eynesbury.edu.au](http://eynesbury.edu.au)

+61 8 8216 9000

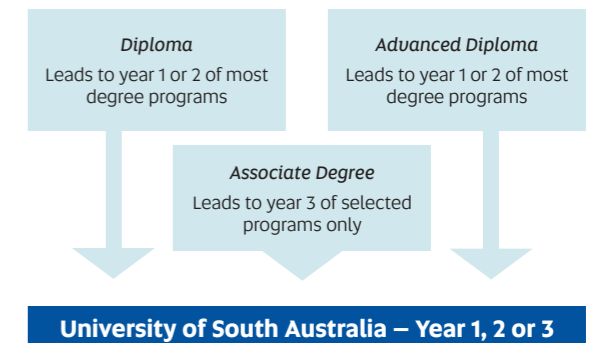
CRICOS provider code: 00561M

TEQSA provider ID: PRV12096



## STREAMLINED VISA APPLICATION

Apply to study with one of our education partners and receive a packaged offer that allows you to apply for one student visa for the entire duration of your study under the Simplified Student Visa Framework (SSVF).



TAFE SA packaged programs offer you a practical way of achieving your end goal of an undergraduate degree from UniSA. Successfully completing a TAFE SA Diploma, Advanced Diploma or Associate Degree provides entry into a range of undergraduate degrees at UniSA, and credit for previous study can lead you directly into the first, second or third year of an undergraduate degree at UniSA, reducing the overall study time through credit transfers.

[tafesa.edu.au/int](http://tafesa.edu.au/int)

[tafesa.international@tafesa.edu.au](mailto:tafesa.international@tafesa.edu.au)

+61 8 8207 8279

CRICOS provider code: 00092B

RTO code: 41026

IHE code: PRV14002

TEQSA provider ID: PRV14002



## CONTACT US

Contact our International Office to find out if you are eligible for entry into a pathway program.

Submit an online form at [unisa.edu.au/enquire](http://unisa.edu.au/enquire) or phone +61 8 8302 0114

# HOW TO APPLY

🌐 [international.unisa.edu.au/how-to-apply](https://international.unisa.edu.au/how-to-apply)



## 1. Find your degree

Explore your study options in this guide (pages 46-51) or go online for more information.

🌐 [study.unisa.edu.au](https://study.unisa.edu.au)



## 2. Check admission requirements

Make sure you are aware of entry requirements including:

- › English language
- › Academic entry
- › Guidelines on genuine student requirement
- › Guidelines on living costs and evidence of funds



## 3. Apply

Once you have found the degree you wish to study, you can apply online either directly or via an Education Agent. Apply at least two months before you intend to start studying. Some students may require more time to ensure they receive their visa.

- › **Apply directly** – You can apply directly via our secure online service. Save your application and return later to continue the process and track your progress
- › **Education Agents** – Depending on your country of citizenship, you may be required to apply through one of our registered Education Agents

🌐 [unisa.edu.au/find-an-agent](https://unisa.edu.au/find-an-agent)

### SUPPORTING DOCUMENTATION

To avoid delays, attach the following documents to your online application.

- › Certified\* copies of academic transcripts and graduation certificates, including information on your institution's grading system as required
- › English language test results (e.g. IELTS or equivalent objective test) where applicable
- › Detailed syllabi/course outlines of previous studies if you are applying for credit or advanced standing
- › Additional academic and employer references if required; and
- › A certified\* copy of the personal details page and signature page of your passport

\*A certified copy is a copy of the original document that has been certified by an official such as a University of South Australia Education Agent or staff member, Justice of the Peace, notary public, police officer or examining authority



## 4. Wait for application assessment

Application outcomes in one to two weeks\*

If you are eligible we will email you or your Education Agent, an offer letter package. If you are not eligible, we may suggest alternative programs or pathways. Your application will be assessed in accordance with the University's Selection and Entry to Programs Policy, which includes the guidelines on genuine student requirement and guidelines on living costs and evidence of funds.

\*From your submission including all supporting documentation required



## 5. Accept your offer

To accept a place in your offered degree, you will need to:

- › Check the offer letter package
- › If all details are correct, log in to our secure online service and complete the steps to accept. This includes uploading any additional documents required, accepting the terms and conditions of your offer and finalising your payment

If you have an Education Agent, they can help you accept via our secure online service:

🌐 [student-unisa.studylink.com](https://student-unisa.studylink.com)

### STUDENT VISAS

We will send you or your Education Agent a Confirmation of Enrolment (CoE) document to enable you or your Education Agent to apply for a student visa for your entry into Australia. Apply for your student visa as soon as you receive your CoE.

🌐 [unisa.edu.au/student-visa](https://unisa.edu.au/student-visa)

### STUDENT PAYMENTS

UniSA uses Convera which helps you make payments in your preferred currency without extra fees and delays.

- › Pay your tuition fees quickly
- › Make payments online, by bank transfer or via credit card
- › Track payments and receive status updates by text and email

🌐 [international.unisa.edu.au/how-to-apply/pay-your-deposit](https://international.unisa.edu.au/how-to-apply/pay-your-deposit)



## 6. Prepare for arrival

- › **Enrol online** – you can enrol before you leave home
- › **Book your travel** – check with your travel agent early for flight options but do not confirm bookings until you receive your visa. You can also book our free airport pick-up service and on-arrival temporary accommodation to help you get started. You should also check the Department of Home Affairs Entering & Leaving Australia page for the latest information on Australia's immigration and border arrangements
- › **Arrive on time** - if you are unable to arrive by the commencement date, you may have to defer your offer as some programs have compulsory orientation
- › **Get ready for Orientation** – attend welcome sessions and activities to meet other students and get to know life on campus and in Adelaide

🌐 [unisa.edu.au/predeparture-checklist](https://unisa.edu.au/predeparture-checklist)



## CHAT WITH ONE OF OUR STUDENT AMBASSADORS

Find out what it is like studying at UniSA and living in Adelaide. Chat with a student who speaks your own language or is studying your preferred degree. Our ambassadors are ready to answer your questions.

🌐 [international.unisa.edu.au/student-ambassadors](https://international.unisa.edu.au/student-ambassadors)

### ANY QUESTIONS?

Contact us at [unisa.edu.au/enquire](https://unisa.edu.au/enquire) or phone +61 8 8302 0114





Program	Program Code	CRICOS Code	Program Length (years)	2025 Indicative Annual Tuition Fee (AUD\$)	Start date(s)	Campus	IELTS English language requirements					Admission requirements by country/region																				
							IELTS Overall	IELTS Reading	IELTS Writing	IELTS Listening	IELTS Speaking	Australian Selection Rank (ATAR)	Year 12 Grades - Guaranteed Entry	Bangladesh HSC	Canada High School (OSSD)	Bynesbury FSP	German Abitur	HKDSE (best 5)	IB (best 6)	India (Best 4) Central Board	India (Best 4) State Board	Kenya KCSE (average)	Matrikulasi / STPM (best 3)	Malaysia UEC (best 5)	Nepal NEB	Norway GPA	Pakistan HSSC	Sri Lanka A Levels (best 3)	Sweden GPA	UK Board CCEA Levels / HK Board	USA SAT 1600	Vietnam
<b>ARCHITECTURE, PLANNING AND DESIGN</b>																																
Bachelor of Architectural Studies *	DBAE	060207K	3	39,400	Feb, Jul	CW	6.0	6.0	6.0			70	B,B,B	4	65	330	3.5	15	26	65	75	B+	6	30	2.61	3	85	7	13	7	1110	7.5
Bachelor of Contemporary Art	DBCX	095004K	3	32,800	Feb, Jul	CW	6.0	6.0	6.0			65	B,B,C	3.5	60	310	3.8	15	26	60	70	B	6	32	2.41	2.8	75	6	12.5	6	1050	7
Bachelor of Design (Graphic and Communication Design)	DBGC	113884H	3	32,800	Feb, Jul	CW	6.0	6.0	6.0			65	B,B,C	3.5	60	310	3.8	15	26	60	70	B	6	32	2.41	2.8	75	6	12.5	6	1050	7
Bachelor of Design (Illustration and Animation)	DBIA	095761F	3	32,800	Feb, Jul	CW	6.0	6.0	6.0			65	B,B,C	3.5	60	310	3.8	15	26	60	70	B	6	32	2.41	2.8	75	6	12.5	6	1050	7
Bachelor of Design (Product Design)	DBPR	071953G	3	35,600	Feb, Jul	CW	6.0	6.0	6.0			65	B,B,C	3.5	60	310	3.8	15	26	60	70	B	6	32	2.41	2.8	75	6	12.5	6	1050	7
Bachelor of Interior Architecture	DBIR	024202C	4	35,600	Feb, Jul	CW	6.0	6.0	6.0			66	B,B,B	3.5	65	320	3.5	15	26	65	75	B	6	31	2.51	3	80	7	13	7	1110	7.5
<b>BUSINESS</b>																																
Bachelor of Accounting *	DBCO	108856K	3	38,300	Feb, Aug	CW	6.0	6.0	6.0			68	B,B,B	3.5	65	320	3.5	15	26	65	75	B	6	31	2.51	3	80	7	13	7	1110	7.5
Bachelor of Business *	DBBN	082882D	3	38,300	Feb, Aug	CW	6.0	6.0	6.0			68	B,B,B	3.5	65	320	3.5	15	26	65	75	B	6	31	2.51	3	80	7	13	7	1110	7.5
Bachelor of Business (Design and Marketing)	DBMD	097501K	3	38,300	Feb, Aug	CW	6.0	6.0	6.0			68	B,B,B	3.5	65	320	3.5	15	26	65	75	B	6	31	2.51	3	80	7	13	7	1110	7.5
Bachelor of Business (Economics, Finance and Trade) *	DBIB	027743E	3	38,300	Feb, Aug	CW	6.0	6.0	6.0			68	B,B,B	3.5	65	320	3.5	15	26	65	75	B	6	31	2.51	3	80	7	13	7	1110	7.5
Bachelor of Business (Financial Planning) *	DBRF	097499K	3	38,300	Feb, Aug	CW	6.0	6.0	6.0			68	B,B,B	3.5	65	320	3.5	15	26	65	75	B	6	31	2.51	3	80	7	13	7	1110	7.5
Bachelor of Business (Human Resource Management)	DBBH	080603K	3	38,300	Feb, Aug	CW	6.0	6.0	6.0			68	B,B,B	3.5	65	320	3.5	15	26	65	75	B	6	31	2.51	3	80	7	13	7	1110	7.5
Bachelor of Business (Innovation and Entrepreneurship) *	DBBN	082892B	3	38,300	Feb, Aug	CW	6.0	6.0	6.0			68	B,B,B	3.5	65	320	3.5	15	26	65	75	B	6	31	2.51	3	80	7	13	7	1110	7.5
Bachelor of Business (International Business)	DBBN	088328D	3	38,300	Feb, Aug	CW	6.0	6.0	6.0			68	B,B,B	3.5	65	320	3.5	15	26	65	75	B	6	31	2.51	3	80	7	13	7	1110	7.5
Bachelor of Business (Logistics and Supply Chain Management) *	DBBL	080915E	3	38,300	Feb, Aug	CW	6.0	6.0	6.0			68	B,B,B	3.5	65	320	3.5	15	26	65	75	B	6	31	2.51	3	80	7	13	7	1110	7.5
Bachelor of Business (Management)	DBBC	080993B	3	38,300	Feb, Aug	CW	6.0	6.0	6.0			68	B,B,B	3.5	65	320	3.5	15	26	65	75	B	6	31	2.51	3	80	7	13	7	1110	7.5
Bachelor of Business (Marketing) *	DBBM	080916D	3	38,300	Feb, Aug	CW	6.0	6.0	6.0			68	B,B,B	3.5	65	320	3.5	15	26	65	75	B	6	31	2.51	3	80	7	13	7	1110	7.5
Bachelor of Business (Property) *	DBPY	024196G	3	38,300	Feb, Aug	CW	6.0	6.0	6.0			68	B,B,B	3.5	65	320	3.5	15	26	65	75	B	6	31	2.51	3	80	7	13	7	1110	7.5
Bachelor of Business (Real Estate Practice) *	DBRF	097500M	3	38,300	Feb, Aug	CW	6.0	6.0	6.0			68	B,B,B	3.5	65	320	3.5	15	26	65	75	B	6	31	2.51	3	80	7	13	7	1110	7.5
Bachelor of Business (Sport and Recreation Management)	DBBS	081326G	3	38,300	Feb, Aug	CW	6.0	6.0	6.0			68	B,B,B	3.5	65	320	3.5	15	26	65	75	B	6	31	2.51	3	80	7	13	7	1110	7.5
Bachelor of Business (Tourism, Event and Hospitality Management) *	DBBE	112695K	3	38,300	Feb, Aug	CW	6.0	6.0	6.0			68	B,B,B	3.5	65	320	3.5	15	26	65	75	B	6	31	2.51	3	80	7	13	7	1110	7.5
Bachelor of Digital Business	DBDB	109017H	3	42,000	Feb, Aug	CW	6.0	6.0	6.0			68	B,B,B	3.5	65	320	3.5	15	26	65	75	B	6	31	2.51	3	80	7	13	7	1110	7.5
Bachelor of Finance *	DBFI	108857J	3	38,300	Feb, Aug	CW	6.0	6.0	6.0			68	B,B,B	3.5	65	320	3.5	15	26	65	75	B	6	31	2.51	3	80	7	13	7	1110	7.5
Bachelor of Marketing and Communication *	DBMN	060210D	3	38,300	Feb, Aug	CW	6.0	6.0	6.0			68	B,B,B	3.5	65	320	3.5	15	26	65	75	B	6	31	2.51	3	80	7	13	7	1110	7.5
<b>EDUCATION AND TEACHING</b>																																
Bachelor of Early Childhood Education (Honours)	MHEC	098150J	4	32,800	Feb	M	7.0	7.0	7.0	7.0	7.0	73	A,B,B	4	65	330	3.5	15	26	65	75	B+	6	30	2.61	3	85	7	13	7	1110	7.5
Bachelor of Primary Education (Honours)	MHPE	098151G	4	32,800	Feb	M	7.0	7.0	7.0	7.0	7.0	73	A,B,B	4	65	330	3.5	15	26	65	75	B+	6	30	2.61	3	85	7	13	7	1110	7.5
Bachelor of Secondary Education (Honours)	LHSE	108403F	4	32,800	Feb	ML	7.0	7.0	7.0	7.0	7.0	73	A,B,B	4	65	330	3.5	15	26	65	75	B+	6	30	2.61	3	85	7	13	7	1110	7.5
<b>ENGINEERING, CONSTRUCTION AND AVIATION</b>																																
Bachelor of Aviation (Management)	LBAN	088879F	3	40,900	Feb, Jul	ML	6.0	6.0	6.0			66	B,B,B	3.5	65	320	3.5	15	26	65	75	B	6	31	2.51	3	80	7	13	7	1110	7.5
Bachelor of Aviation (Pilot)	LBAN	088880B	3	40,900	Feb, Jul	ML	6.0	6.0	6.0			66	B,B,B	3.5	65	320	3.5	15	26	65	75	B	6	31	2.51	3	80	7	13	7	1110	7.5
Bachelor of Construction Management	IBBE	099378C	3	39,400	Feb, Jul	CE	6.0	6.0	6.0			67	B,B,B	3.5	65	320	3.5	15	26	65	75	B	6	31	2.51	3	80	7	13	7	1110	7.5
Bachelor of Construction Management (Honours) *	IHCN	099379B	4	39,400	Feb, Jul	CE	6.0	6.0	6.0			78	A,A,B	4	75	370	3	16	29	70	80	B+	9	26	2.81	4	85	9	15	9	1270	8.5
Bachelor of Engineering (Honours) (Civil and Construction Management) *	LHMI	099377D	4	42,000	Feb, Jul	ML	6.0	6.0	6.0			72	B,B,B	4	65	330	3.5	15	26	65	75	B+	6	30	2.61	3	85	7	13	7	1110	7.5
Bachelor of Engineering (Honours) (Civil and Structural) *	LHMI	081807A	4	42,000	Feb, Jul	ML	6.0	6.0	6.0			72	B,B,B	4	65	330	3.5	15	26	65	75	B+	6	30	2.61	3	85	7	13	7	1110	7.5
Bachelor of Engineering (Honours) (Civil) *	LHMI	081808M	4	42,000	Feb, Jul	ML	6.0	6.0	6.0			72	B,B,B	4	65	330	3.5	15	26	65	75	B+	6	30	2.61	3	85	7	13	7	1110	7.5
Bachelor of Engineering (Honours) (Electrical and Electronic) *	LHIF	081810F	4	42,000	Feb, Jul	ML	6.0	6.0	6.0			72	B,B,B	4	65	330	3.5	15	26	65	75	B+	6	30	2.61	3	85	7	13	7	1110	7.5
Bachelor of Engineering (Honours) (Electrical and Mechatronic) *	LHIF	081811E	4	42,000	Feb, Jul	ML	6.0	6.0	6.0			72	B,B,B	4	65	330	3.5	15	26	65	75	B+	6	30	2.61	3	85	7	13	7	1110	7.5
Bachelor of Engineering (Honours) (Mechanical and Advanced Manufacturing) *	LHMR	081814B	4	42,000	Feb, Jul	ML	6.0	6.0	6.0			72	B,B,B	4	65	330	3.5	15	26	65	75	B+	6	30	2.61	3	85	7	13	7	1110	7.5
Bachelor of Engineering (Honours) (Mechanical and Mechatronic) *	LHMR	081815A	4	42,000	Feb, Jul	ML	6.0	6.0	6.0			72	B,B,B	4	65	330	3.5	15	26	65	75	B+	6	30	2.61	3	85	7	13	7	1110	7.5
Bachelor of Engineering (Honours) (Mechanical) *	LHMR	081816M	4	42,000	Feb, Jul	ML	6.0	6.0	6.0			72	B,B,B	4	65	330	3.5	15	26	65	75	B+	6	30	2.61	3	85	7	13	7	1110	7.5
<b>FILM, TV, VFX, CREATIVE AND COMMUNICATIONS</b>																																
Bachelor of Communication and Media *	MBCD	081881B	3	32,800	Feb, Jul	CW, M	6.0	6.0	6.0			65	B,B,C	3.5	60	310	3.8	15	26	60	70	B	6	32	2.41	2.8	75	6	12.5	6	1050	7
Bachelor of Creative Industries **	DBCI	0100163	3	32,800	Feb, Jul	CW	6.0	6.0	6.0			65	B,B,C	3.5	60	310	3.8	15	26	60	70	B	6	32	2.41	2.8	75	6	12.5	6	1050	7

# Undergraduate degrees offered in 2025

SCAN THE QR CODE TO VIEW THE PROGRAM CHARTS ONLINE



Program	Program Code	CRICOS Code	Program Length (years)	2025 indicative Annual Tuition Fee (AUD)	Start Date(s)	Campus	IELTS English language requirements					Admission requirements by country/region																				
							IELTS Overall	IELTS Reading	IELTS Writing	IELTS Listening	IELTS Speaking	Australian Selection Rank (ATAR)	Year 12 Grades - Guaranteed Entry	Bangladesh HSC	Canada High School (OSSD)	Bynesbury FSP	German Abitur	HKDSE (best 5)	IB (best 6)	India (best 4) Central Board	India (best 4) State Board	Kenya KCSE (average)	Maldives / STPM (best 3)	Malaysia UEC (best 5)	Nepal NEB	Norway GPA	Pakistan HSSC	Sri Lanka A Levels (best 3)	Sweden GPA	UK Board CCE A Levels / HK Board	USA SAT 1600	Vietnam
<b>NURSING, HEALTH AND MEDICAL SCIENCES</b>																																
Bachelor of Biomedical Science	IBBM	105413F	3	43,300	Feb	CE	6.5	6.0	6.0	6.0	6.0	72	B,B,B	4	65	330	3.5	15	26	65	75	B+	6	30	2.61	3	85	7	13	7	1110	7.5
Bachelor of Clinical Exercise Physiology (Honours)	IHCP	095008F	4	44,300	Feb	CE	6.5	6.5	6.5	6.5	6.5	95	NA	5	95	430	1.5	22	37	90	95	A	13	20	3.61	5.5	95	13	19	13	1510	9.5
Bachelor of Exercise and Sport Science	IBXS	094935G	3	35,600	Feb, Jul	CE	6.5	6.5	6.5	6.5	6.5	80	AAA	4	75	370	3	17	29	70	80	B+	9	26	2.81	4	85	9	15	9	1270	8.5
Bachelor of Health Science (Public Health)	IBHP	0100073	3	36,400	Feb	CE	6.5	6.5	6.5	6.5	6.5	70	B,B,B	4	65	330	3.5	15	26	65	75	B+	6	30	2.61	3	85	7	13	7	1110	7.5
Bachelor of Human Movement	IBHT	027744D	3	35,600	Feb, Jul	CE	6.5	6.5	6.5	6.5	6.5	75	A,B,B	4	70	350	3.3	16	27	65	75	B+	7	28	2.71	3.5	85	7	14	7	1190	8
Bachelor of Laboratory Medicine (Honours)	IHBL	088329C	4	42,000	Feb	CE	6.5	6.5	6.5	6.5	6.5	72	B,B,B	4	65	330	3.5	15	26	65	75	B+	6	30	2.61	3	85	7	13	7	1110	7.5
Bachelor of Medical Radiation Science (Medical Imaging) Q	IBRS	088578G	4	44,300	Feb	CE	7.0	7.0	7.0	7.0	7.0	93	NA	5	90	415	1.8	22	35	85	95	A	12	20	3.41	5	90	12	18	12	1465	9.5
Bachelor of Medical Radiation Science (Nuclear Medicine) Q	IBRS	088333G	4	44,300	Feb	CE	7.0	7.0	7.0	7.0	7.0	93	NA	5	90	415	1.8	22	35	85	95	A	12	20	3.41	5	90	12	18	12	1465	9.5
Bachelor of Medical Radiation Science (Radiation Therapy) Q	IBRS	088335E	4	44,300	Feb	CE	7.0	7.0	7.0	7.0	7.0	93	NA	5	90	415	1.8	22	35	85	95	A	12	20	3.41	5	90	12	18	12	1465	9.5
Bachelor of Midwifery Q	IBMW	036241G	3	39,000	Feb	CE	7.0	7.0	7.0	7.0	7.0	93	NA	5	90	415	1.8	22	35	85	95	A	12	20	3.41	5	90	12	18	12	1465	9.5
Bachelor of Nursing Q	IBNU	024218F	3	39,000	Feb	CE	7.0	7.0	7.0	7.0	7.0	70	B,B,B	4	65	330	3.5	15	26	65	75	B+	6	30	2.61	3	85	7	13	7	1110	7.5
Bachelor of Nutrition and Food Sciences	IBNF	036238C	3	40,900	Feb	CE	6.5	6.5	6.5	6.5	6.5	72	B,B,B	4	65	330	3.5	15	26	65	75	B+	6	30	2.61	3	85	7	13	7	1110	7.5
Bachelor of Occupational Therapy (Honours) Q	IHOC	088336D	4	44,300	Feb	CE	7.0	7.0	7.0	7.0	7.0	90	NA	5	85	410	2.5	19	33	80	90	A	12	22	3.21	5	90	12	17.5	12	1420	9.5
Bachelor of Outdoor and Environmental Leadership	IBOE	0101602	3	39,400	Feb, Jul	CE	6.0	6.0	6.0			70	B,B,B	4	65	330	3.5	15	26	65	75	B+	6	30	2.61	3	85	7	13	7	1110	7.5
Bachelor of Pharmaceutical Science	IBPA	060209G	3	40,900	Feb	CE	6.5	6.5	6.5	6.5	6.5	72	B,B,B	4	65	330	3.5	15	26	65	75	B+	6	30	2.61	3	85	7	13	7	1110	7.5
Bachelor of Pharmacy (Honours)	IHPC	088337C	4	46,200	Feb	CE	6.5	6.5	6.5	6.5	6.5	83	A,A,B	4	75	370	3	17	29	70	80	B+	9	26	2.81	4	85	9	15	9	1270	8.5
Bachelor of Physiotherapy (Honours) Q	IHPZ	088338B	4	44,300	Feb	CE	7.0	7.0	7.0	7.0	7.0	93	NA	5	90	415	1.8	22	35	85	95	A	12	20	3.41	5	90	12	18	12	1465	9.5
Bachelor of Podiatry Q	IBOP	008312G	4	44,300	Feb	CE	7.0	7.0	7.0	7.0	7.0	87	AAA	4.5	80	390	2.8	18	30	75	85	A-	10	24	3.01	4.5	85	10	16	10	1350	9
Bachelor of Speech Pathology (Honours) Q	IHSP	0101865	4	44,300	Feb	CE	8.0	8.0	8.0	8.0	8.0	90	NA	5	85	410	2.5	19	33	80	90	A	12	22	3.21	5	90	12	17.5	12	1420	9.5
<b>PSYCHOLOGY, SOCIAL WORK AND HUMAN SERVICES</b>																																
Bachelor of Arts	MBAA	024180D	3	32,800	Feb, Jul	M	6.0	6.0	6.0			65	B,B,C	3.5	60	310	3.8	15	26	60	70	B	6	32	2.41	2.8	75	6	12.5	6	1050	7
Bachelor of Arts (Aboriginal Studies)	MBAA	108402G	3	32,800	Feb, Jul	M	6.0	6.0	6.0			65	B,B,C	3.5	60	310	3.8	15	26	60	70	B	6	32	2.41	2.8	75	6	12.5	6	1050	7
Bachelor of Arts (Applied Linguistics)	MBAA	097509B	3	32,800	Feb, Jul	M	6.0	6.0	6.0			65	B,B,C	3.5	60	310	3.8	15	26	60	70	B	6	32	2.41	2.8	75	6	12.5	6	1050	7
Bachelor of Arts (Creative Writing and Literature)	MBAA	097508C	3	32,800	Feb, Jul	M	6.0	6.0	6.0			65	B,B,C	3.5	60	310	3.8	15	26	60	70	B	6	32	2.41	2.8	75	6	12.5	6	1050	7
Bachelor of Arts (Cultural Studies)	MBAA	097502J	3	32,800	Feb, Jul	M	6.0	6.0	6.0			65	B,B,C	3.5	60	310	3.8	15	26	60	70	B	6	32	2.41	2.8	75	6	12.5	6	1050	7
Bachelor of Arts (History and Global Politics)	MBAA	097504G	3	32,800	Feb, Jul	M	6.0	6.0	6.0			65	B,B,C	3.5	60	310	3.8	15	26	60	70	B	6	32	2.41	2.8	75	6	12.5	6	1050	7
Bachelor of Arts (Languages)	MBAA	081802F	3	32,800	Feb	M	6.0	6.0	6.0			65	B,B,C	3.5	60	310	3.8	15	26	60	70	B	6	32	2.41	2.8	75	6	12.5	6	1050	7
Bachelor of Arts (Law, Policy and Politics)	MBAA	098294D	3	32,800	Feb, Jul	M	6.0	6.0	6.0			65	B,B,C	3.5	60	310	3.8	15	26	60	70	B	6	32	2.41	2.8	75	6	12.5	6	1050	7
Bachelor of Arts (Psychology)	MBAA	097506E	3	32,800	Feb, Jul	M	6.0	6.0	6.0			65	B,B,C	3.5	60	310	3.8	15	26	60	70	B	6	32	2.41	2.8	75	6	12.5	6	1050	7
Bachelor of Arts (Sociology)	MBAA	081805C	3	32,800	Feb, Jul	M	6.0	6.0	6.0			65	B,B,C	3.5	60	310	3.8	15	26	60	70	B	6	32	2.41	2.8	75	6	12.5	6	1050	7
Bachelor of Psychology	MBPU	036236E	3	34,400	Feb, Jul	M	6.0	6.0	6.0			67	B,B,B	3.5	65	320	3.5	15	26	65	75	B	6	31	2.51	3	80	7	13	7	1110	7.5
Bachelor of Psychology (Cognitive Neuroscience)	MBPU	079096A	3	34,400	Feb, Jul	M	6.0	6.0	6.0			72	B,B,B	4	65	330	3.5	15	26	65	75	B+	6	30	2.61	3	85	7	13	7	1110	7.5
Bachelor of Psychology (Counselling and Interpersonal Skills)	MBPU	081882A	3	34,400	Feb, Jul	M	6.0	6.0	6.0			67	B,B,B	3.5	65	320	3.5	15	26	65	75	B	6	31	2.51	3	80	7	13	7	1110	7.5
Bachelor of Psychology (Honours)	MHPU	036237D	4	34,400	Feb	M	6.0	6.0	6.0			85	NA	4.5	80	390	2.8	18	30	75	85	A-	10	24	3.01	4.5	85	10	16	10	1350	9
Bachelor of Psychology (Honours) (Cognitive Neuroscience)	MHPU	091255A	4	34,400	Feb	M	6.0	6.0	6.0			83	NA	4	75	370	3	17	29	70	80	B+	9	26	2.81	4	85	9	15	9	1270	8.5
Bachelor of Social Science (Ageing and Disability)	MBSS	098030F	3	32,800	Feb	M	6.0	6.0	6.0			72	B,B,B	4	65	330	3.5	15	26	65	75	B+	6	30	2.61	3	85	7	13	7	1110	7.5
Bachelor of Social Science (Human Services)	MBSS	002497J	3	32,800	Feb	M	6.0	6.0	6.0			67	B,B,B	3.5	65	320	3.5	15	26	65	75	B	6	31	2.51	3	80	7	13	7	1110	7.5
Bachelor of Social Work	MBSW	000537M	4	32,800	Feb	M	7.0	7.0	7.0	7.0	7.0	67	B,B,B	3.5	65	320	3.5	15	26	65	75	B	6	31	2.51	3	80	7	13	7	1110	7.5
Bachelor of Social Work (Honours)	MHSW	081883M	4	32,800	Feb	M	7.0	7.0	7.0	7.0	7.0	80	NA	4	75	370	3	17	29	70	80	B+	9	26	2.81	4	85	9	15	9	1270	8.5
<b>DOUBLE DEGREES</b>																																
Bachelor of Accounting, Bachelor of Finance	DBCN	108858H	4	38,300	Feb, Aug	CW	6.0	6.0	6.0			68	B,B,B	3.5	65	320	3.5	15	26	65	75	B	6	31	2.51	3	80	7	13	7	1110	7.5
Bachelor of Exercise and Sport Science, Bachelor of Nutrition and Food Sciences	IBXN	094936G	4	40,900	Feb, Jul	CE	6.5	6.5	6.5	6.5	6.5	90	AAA	5	85	410	2.5	19	33	80	90	A	12	22	3.21	5	90	12	17.5	12	1420	9.5
Bachelor of Exercise and Sport Science, Bachelor of Psychology (Counselling and Interpersonal Skills)	IBXP	094937F	4	35,600	Feb	CE, M	6.5	6.5	6.5	6.5	6.5	90	AAA	5	85	410	2.5	19	33	80	90	A	12	22	3.21	5	90	12				

# Postgraduate degrees offered in 2025

SCAN THE QR CODE TO VIEW THE PROGRAM CHARTS ONLINE



Program	Program Code	CRICOS Code	Program Length (years)	2025 indicative Annual Tuition Fee (AUD\$)	Start Date(s)	Campus	IELTS English language requirements				
							IELTS Overall	IELTS Reading	IELTS Writing	IELTS Listening	IELTS Speaking
<b>ARCHITECTURE, PLANNING AND DESIGN</b>											
Graduate Diploma in Design (Communication Design)	DGSP	082776F	1	38,300	Feb, Jul	CW	6.5	6.0	6.0		
Graduate Diploma in Design (Contemporary Art)	DGSP	095762E	1	38,300	Feb, Jul	CW	6.5	6.0	6.0		
Graduate Diploma in Design (Design and Construct)	DGSP	082775G	1	38,300	Feb, Jul	CW	6.5	6.0	6.0		
Graduate Diploma in Design (Industrial Design)	DGSP	082774G	1	38,300	Feb, Jul	CW	6.5	6.0	6.0		
Graduate Diploma in Design (Interior Architecture)	DGSP	082773J	1	38,300	Feb, Jul	CW	6.5	6.0	6.0		
Graduate Diploma in Design (Sustainable Design)	DGSP	082772K	1	38,300	Feb, Jul	CW	6.5	6.0	6.0		
Graduate Diploma in Urban and Regional Planning	DGUR	000579A	1	40,900	Feb, Jul	CW	6.5	6.0	6.0		
Master of Architecture	DMAE	060208J	2	42,000	Feb, Jul	CW	6.5	6.0	6.0		
Master of Design (Communication Design)	DMSP	082771M	2	38,300	Feb, Jul	CW	6.5	6.0	6.0		
Master of Design (Contemporary Art)	DMSP	095763D	2	38,300	Feb, Jul	CW	6.5	6.0	6.0		
Master of Design (Design and Construct)	DMSP	082770A	2	38,300	Feb, Jul	CW	6.5	6.0	6.0		
Master of Design (Industrial Design)	DMSP	071952G	2	38,300	Feb, Jul	CW	6.5	6.0	6.0		
Master of Design (Interior Architecture)	DMSP	082769E	2	38,300	Feb, Jul	CW	6.5	6.0	6.0		
Master of Design (Sustainable Design)	DMSP	082768F	2	38,300	Feb, Jul	CW	6.5	6.0	6.0		
Master of Urban and Regional Planning	DMUR	071951J	2	40,900	Feb, Jul	CW	6.5	6.0	6.0		
<b>BUSINESS</b>											
Graduate Certificate in Business	DCBZ	081140F	0.5	42,000	Feb, Aug	CW	6.5	6.0	6.0		
Graduate Certificate in Business Administration	DCMA	024119J	0.5	43,800	Jan, Mar, Jun, Sep	CW	6.5	6.0	6.0		
Graduate Certificate in Financial Planning	DCFP	098152G	0.5	42,000	Feb, Aug	CW	6.5	6.0	6.0		
Graduate Certificate in Leadership	DCLD	106892M	0.5	42,000	Feb, Aug	CW	6.5	6.0	6.0		
Graduate Diploma in Business Administration	DGMA	024133M	1	43,800	Jan, Mar, Jun, Sep	CW	6.5	6.0	6.0		
Graduate Diploma in Financial Planning	DGFP	098153F	1	42,000	Feb, Aug	CW	6.5	6.0	6.0		
International Master of Business Administration	DMIN	081137A	2	42,000	Feb, Aug	CW	6.5	6.0	6.0		
International Master of Business Administration (Advertising and Brand Management)	DMIN	097175G	2	42,000	Feb, Aug	CW	6.5	6.0	6.0		
International Master of Business Administration (Business Analytics)	DMIN	010192I	2	42,000	Feb, Aug	CW	6.5	6.0	6.0		
International Master of Business Administration (Finance)	DMIN	092314J	2	42,000	Feb, Aug	CW	6.5	6.0	6.0		
International Master of Business Administration (Human Resource Management)	DMIN	091996G	2	42,000	Feb, Aug	CW	6.5	6.0	6.0		
International Master of Business Administration (Marketing)	DMIN	091997G	2	42,000	Feb, Aug	CW	6.5	6.0	6.0		
International Master of Business Administration (Supply Chain Management)	DMIN	091995J	2	42,000	Feb, Aug	CW	6.5	6.0	6.0		
International Master of Business Administration (Tourism and Event Management)	DMIN	091994K	2	42,000	Feb, Aug	CW	6.5	6.0	6.0		
Master of Business Administration	DMMA	048635B	1.5	43,800	Jan, Mar, Jun, Sep	CW	6.5	6.0	6.0		
Master of Business Administration (Finance)	DMMA	083050C	1.5	43,800	Jan, Mar, Jun, Sep	CW	6.5	6.0	6.0		
Master of Business Administration (Human Resource Management)	DMMA	083052A	1.5	43,800	Jan, Mar, Jun, Sep	CW	6.5	6.0	6.0		
Master of Business Administration (Marketing)	DMMA	083054K	1.5	43,800	Jan, Mar, Jun, Sep	CW	6.5	6.0	6.0		
Master of Finance	DMFC	082591D	2	42,000	Feb, Aug	CW	6.5	6.0	6.0		
Master of Finance (Financial Planning)	DMFP	098154E	2	42,000	Feb, Aug	CW	6.5	6.0	6.0		
Master of Finance (Global Investment and Trade)	DMFC	0101603	2	42,000	Feb, Aug	CW	6.5	6.0	6.0		
Master of Management	DMMX	091989G	1.5	42,000	Feb, Aug	CW	6.5	6.0	6.0		
Master of Management (Advertising and Brand Management)	DMMX	098292F	1.5	42,000	Feb, Aug	CW	6.5	6.0	6.0		
Master of Management (Business Analytics)	DMMX	010192O	1.5	42,000	Feb, Aug	CW	6.5	6.0	6.0		
Master of Management (Human Resource Management)	DMMX	091992A	1.5	42,000	Feb, Aug	CW	6.5	6.0	6.0		
Master of Management (Marketing)	DMMX	091993M	1.5	42,000	Feb, Aug	CW	6.5	6.0	6.0		
Master of Management (Tourism and Event Management)	DMMX	091990C	1.5	42,000	Feb, Aug	CW	6.5	6.0	6.0		
Master of Professional Accounting	DMPC	082982M	2	42,000	Feb, Aug	CW	6.5	6.0	6.0		
<b>EDUCATION AND TEACHING</b>											
Master of Education	MMEM	111862H	2	35,600	Feb, Jul	M	6.5	6.0	6.0		
Master of Teaching (Early Childhood)	MMET	077214E	2	35,600	Feb	M	7.0	7.0	7.0	7.5	7.5
Master of Teaching (Primary)	MMET	077215D	2	35,600	Feb	M	7.0	7.0	7.0	7.0	7.0
Master of Teaching (Secondary)	MMET	077217B	2	35,600	Feb, Jul	ML	7.0	7.0	7.0	7.0	7.0
<b>ENGINEERING, CONSTRUCTION AND AVIATION</b>											
Graduate Certificate in Engineering (Engineering Management)	LCEB	098377A	0.5	43,700	Feb, Jul	ML	6.5	6.0	6.0		
Graduate Diploma in Aviation °	LCAN	102581C	1	119,600	Feb	ML	6.5	6.0	6.0		
Graduate Diploma in Engineering (Engineering Management)	LGEB	077354D	1	43,700	Feb, Jul	ML	6.5	6.0	6.0		
Graduate Diploma in Project Management	ICBP	013176B	1	40,900	Feb, Jul	CE	6.5	6.0	6.0		
Graduate Diploma in Project Management (Contract Management)	ICBP	098253B	1	40,900	Feb, Jul	CE	6.5	6.0	6.0		
Master of Engineering (Civil and Infrastructure) °	LMCL	088538E	2	43,700	Feb, Jul	ML	6.5	6.0	6.0		
Master of Engineering (Electrical Power) °	LMEL	079908C	2	43,700	Feb, Jul	ML	6.5	6.0	6.0		
Master of Engineering (Engineering Management) °	LMEB	077355C	2	43,700	Feb, Jul	ML	6.5	6.0	6.0		
Master of Engineering (Water Resources Management)	LMCL	088540M	2	43,700	Feb, Jul	ML	6.5	6.0	6.0		
Master of Project and Program Management	IMGM	106890B	1.5	40,900	Feb, Jul	CE	6.5	6.0	6.0		
Master of Project and Program Management (Contract Management)	IMGM	106891A	1.5	40,900	Feb, Jul	CE	6.5	6.0	6.0		
Master of Project Management	IMPA	081832M	2	40,900	Feb, Jul	CE	6.5	6.0	6.0		

Program	Program Code	CRICOS Code	Program Length (years)	2025 indicative Annual Tuition Fee (AUD\$)	Start Date(s)	Campus	IELTS English language requirements				
							IELTS Overall	IELTS Reading	IELTS Writing	IELTS Listening	IELTS Speaking
<b>FILM, TV, VFX, CREATIVE AND COMMUNICATIONS</b>											
Graduate Certificate in 3D Animation	ICTD	113888D	0.5	30,600	Jun	CE*	6.5	6.0	6.0		
Graduate Certificate in Compositing and Tracking	ICVE	088908F	0.5	30,600	Feb, Sep	CE*	6.5	6.0	6.0		
Graduate Certificate in Creature Effects	ICCR	113885G	0.5	30,600	Jun	CE*	6.5	6.0	6.0		
Graduate Certificate in Dynamic Effects and Lighting	ICDL	092822M	0.5	30,600	Feb, Sep	CE*	6.5	6.0	6.0		
Graduate Diploma in Communication	DGCO	0100166	1	34,100	Feb, Jul	CW	6.5	6.0	6.0	6.0	6.0
Master of Communication	DMCO	0100167	2	34,100	Feb, Jul	CW	6.5	6.0	6.0	6.0	6.0
<b>INFORMATION TECHNOLOGY, SCIENCE AND MATHEMATICS</b>											
Graduate Certificate in Data Science	LCDS	079910J	0.5	40,900	Feb, Jul	ML	6.5	6.0	6.0		
Graduate Certificate in Environmental Science	LCEES	058637F	0.5	40,900	Feb, Jul	ML	6.5	6.0	6.0		
Graduate Certificate in Information Technology	LCIG	081820D	0.5	39,400	Feb, Jul	CW, ML	6.5	6.0	6.0		
Graduate Diploma in Data Science	LGDS	079911G	1	40,900	Feb, Jul	ML	6.5	6.0	6.0		
Graduate Diploma in Environmental Science	LGES	058636G	1	40,900	Feb, Jul	ML	6.5	6.0	6.0		
Graduate Diploma in Information Technology (Cyber Security)	LGIG	110777B	1	39,400	Feb, Jul	CW, ML	6.5	6.0	6.0		
Graduate Diploma in Information Technology (Enterprise Management)	LGIG	081822B	1	39,400	Feb, Jul	CW, ML	6.5	6.0	6.0		
Master of Data Science	LMDS	079912G	2	40,900	Feb, Jul	ML	6.5	6.0	6.0		
Master of Environmental Science	LMEV	058635G	2	40,900	Feb, Jul	ML	6.5	6.0	6.0		
Master of Information Technology (Cyber Security)	LMIG	110778A	2	39,400	Feb, Jul	CW, ML	6.5	6.0	6.0		
Master of Information Technology (Enterprise Management)	LMIG	081822C	2	39,400	Feb, Jul	CW, ML	6.5	6.0	6.0		
<b>NURSING, HEALTH AND MEDICAL SCIENCES</b>											
Graduate Certificate in Advanced Clinical Musculoskeletal and Sports Physiotherapy	ICMS	0100852	0.5	43,900	Jul	CE	7.0	7.0	7.0	7.0	7.0
Graduate Certificate in Health Services Management	ICHS	102764G	0.5	32,800	Feb, Jul	CE	6.5		6.5		6.5
Graduate Diploma in Health Services Management	IGHM	102765F	1	32,800	Feb, Jul	CE	6.5		6.5		6.5
Graduate Diploma in Medical Sonography (Cardiac)*	IGSO	NOTREQ	1	35,600	Feb, Jul	CE	7.0	7.0	7.0	7.0	7.0
Graduate Diploma in Medical Sonography (General)*	IGSO	NOTREQ	1	35,600	Feb, Jul	CE	7.0	7.0	7.0	7.0	7.0
Graduate Diploma in Medical Sonography (Vascular)*	IGSO	NOTREQ	1	35,600	Feb, Jul	CE	7.0	7.0	7.0	7.0	7.0
Master of Advanced Clinical Physiotherapy (Musculoskeletal)	IMAP	088576K	1	46,200	Jul	CE	7.0	7.0	7.0	7.0	7.0
Master of Advanced Clinical Physiotherapy (Sports)	IMAP	088577J	1	46,200	Jul	CE	7.0	7.0	7.0	7.0	7.0
Master of Health Services Management	IMHM	096783C	2	32,800	Feb, Jul	CE	6.5		6.5		6.5
<b>PSYCHOLOGY, SOCIAL WORK AND HUMAN SERVICES</b>											
Master of Social Work	MMSK	064242G	2	36,000	Feb	M	7.0	7.0	7.0	7.0	7.0

## KEY

### Campus codes

CE City East CW City West ML Mawson Lakes M Magill

### Symbol codes

Q Quota applies

~ Please note this degree is based at the City West campus however some courses will be offered at the Magill campus.

+ Applicants with a completed bachelor's degree can receive six months of credit and complete this program in three and a half years full-time.

¥ Classes are delivered at Rising Sun Pictures in the Adelaide CBD.

^ This program is not available to onshore student visa holders. If you are planning to commence your studies as an offshore student, please visit our website for a full list of available degrees. Not all degrees listed here are available to offshore students.

▫ Students in this program can choose from 12 Industry Majors to explore their creativity in the area that interests them most including; animation and visual effects, comic book creation, communication and media, contemporary art studies, creative writing and literature, digital media, festivals, film and television, games design and production, performing arts, screen studies, social media.

\* Pathway to Masters  
For select degrees, you can fast-track your studies with our Pathway to Masters package. For more information, visit: [study.unisa.edu.au/fast-track-to-masters](http://study.unisa.edu.au/fast-track-to-masters)

► Fast-track Masters in STEM  
For select master degrees, you can add a fast-track master to the end of your degree (1 year instead of 2). For more information, visit: [international.unisa.edu.au/fast-track-masters-in-stem/](http://international.unisa.edu.au/fast-track-masters-in-stem/)

♦ Two masters in two years  
For select master degrees, you can potentially complete this degree along with a Master of Project Management as a 'two masters in two years' package, depending on your previous education. For more information, visit: [international.unisa.edu.au/2m2y/](http://international.unisa.edu.au/2m2y/)

### 1 year Honours

The University offers a range of 1 year Honours degrees for students wishing to pursue further studies. For more information on available disciplines please visit: [study.unisa.edu.au](http://study.unisa.edu.au)

### Important Information

The University of South Australia reserves the right to alter, amend or delete any program, fee, course, admission requirement, or mode of delivery without prior notice.

Some programs may have additional entry requirements.

For further details and to view the most up to date program information, visit: [study.unisa.edu.au](http://study.unisa.edu.au)

Please note the University calculates a Grade Point Average (GPA) on a scale from 1–7. For more information, go to: [unisa.edu.au/gpa](http://unisa.edu.au/gpa)

### Fees

Tuition fees are based on 2025 fees and are accurate at the time of publication. Fees are subject to change and once you have started your program, your tuition fees will increase each calendar year. However, your fees will not be more than the fees for commencing (new) students in the same year. Your tuition fees will be based on your enrolment and the fees set for that year. You will be liable for these fees upon acceptance of an offer from the University.

In the event of a variation between the fees listed here and the approved tuition fees found on your program page [study.unisa.edu.au](http://study.unisa.edu.au), the university approved tuition fee will prevail. All fees are listed in Australian dollars (AUD\$).

You may incur incidental fees in addition to your tuition fees during your studies. A list of the estimated non-tuition fees you may incur during your program can be found at [international.unisa.edu.au/non-tuition-fees](http://international.unisa.edu.au/non-tuition-fees)



**Chamathya Ranawana**  
Sri Lanka  
Master of Health Services Management  
Vice Chancellor's International  
Excellence Scholarship recipient

# SCHOLARSHIPS

Each year more than 2,500 students benefit from our scholarships and grants, worth millions of dollars. We have a range of categories including support for high achievers and students in need, along with scholarships specifically for international students.

[unisa.edu.au/scholarships](https://unisa.edu.au/scholarships)

## VICE CHANCELLOR'S INTERNATIONAL EXCELLENCE SCHOLARSHIP

Receive a 50% reduction in your student contributions (tuition fees) for the duration of your degree.

## INTERNATIONAL MERIT SCHOLARSHIP

Receive a 15% reduction in your student contributions (tuition fees) for the duration of your degree.

For more scholarships and to view full scholarship conditions, please visit:

[unisa.edu.au/international-scholarships](https://unisa.edu.au/international-scholarships)

## AUSTRALIA AWARDS AND SPONSORSHIPS

Become a future industry leader and have your education paid for by a UniSA partner, such as the Australian Government, a foreign government, employer or partner university. Thrive at UniSA in our highly supported programs for sponsored students and Australia Awards scholarship students.

[unisa.edu.au/sponsored-students](https://unisa.edu.au/sponsored-students)

[international.unisa.edu.au/australiaawards](https://international.unisa.edu.au/australiaawards)



## DIRECT INTERNATIONAL FLIGHTS

- Auckland / 4 hours 25 minutes
- Denpasar / 5 hours 10 minutes
- Doha / 13 hours 55 minutes
- Dubai\* / 13 hours 25 minutes
- Kuala Lumpur / 7 hours
- Nadi (Fiji) / 6 hours 15 minutes
- Singapore / 6 hours 30 minutes

(Approximate times displayed for direct flights to Adelaide)

\*returning in October 2024

## DOMESTIC FLIGHTS

- Brisbane / 2 hours 20 minutes
- Canberra / 1 hour 40 minutes
- Darwin / 3 hours 40 minutes
- Hobart / 1 hour 55 minutes
- Melbourne / 1 hour
- Perth / 3 hours 15 minutes
- Sydney / 2 hours



# University of South Australia



[international.unisa.edu.au](https://international.unisa.edu.au)

**Telephone:** +61 8 8302 0114

**Email:** [international@unisa.edu.au](mailto:international@unisa.edu.au)

**Freecall:** (Australia) 1800 1818 58

 [youtube.com/unisouthaustralia](https://youtube.com/unisouthaustralia)

 [facebook.com/UnISA](https://facebook.com/UnISA)

 [x.com/universitysa](https://x.com/universitysa)

 [instagram.com/universitysa](https://instagram.com/universitysa)

 [weibo.com/studyatunisa](https://weibo.com/studyatunisa)

 WeChat 微信公众号: 南澳大学国际招生部

 小红书 小红书号: 1021014646

The information provided in this publication is for general information only, and the University of South Australia makes no representation about the content, suitability, accuracy or completeness of this information for any purpose. It is provided "as is" without express or implied warranty.

Information correct at time of printing (March 2024)

CRICOS provider number OO121B

Australian University provider number PRV12107